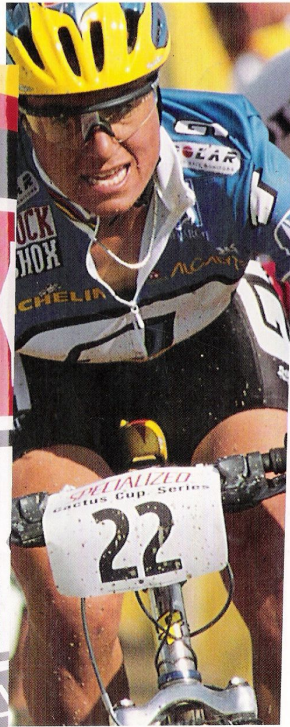




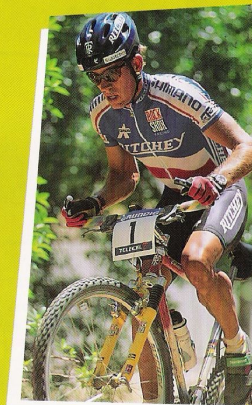
**ROCK  
SHOX  
USA**



1997

The new world of RockShox

Universe



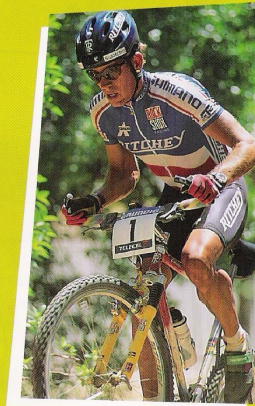
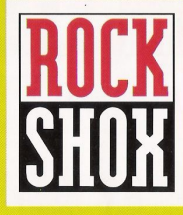
**ROCK  
SHOX**

Swiss Rider, Thomas Frischknecht  
Olympic Silver Medalist  
Team Ritchey

For 1997, we have a slew of great new products. The Judy line is lighter, stiffer, and better than ever. The new Indy line combines performance with great value. Our expanded Deluxe rear shock line is spec'd on over 30 full suspension models that you will see in stores worldwide. And there's a whole lot more.

So please, take a look inside. Check out all our new products and read the fine print. We think you'll see there's a reason why RockShox is the leader in suspension—we know how to have fun.

Universe



Swiss Rider, Thomas Frischknecht  
Olympic Silver Medalist  
Team Ritchey

For 1997, we have a slew of great new products. The Judy line is lighter, stiffer, and better than ever. The new Indy line combines performance with great value. Our expanded Deluxe rear shock line is spec'd on over 30 full suspension models that you will see in stores worldwide. And there's a whole lot more.

So please, take a look inside. Check out all our new products and read the fine print. We think you'll see there's a reason why RockShox is the leader in suspension--we know how to have fun.

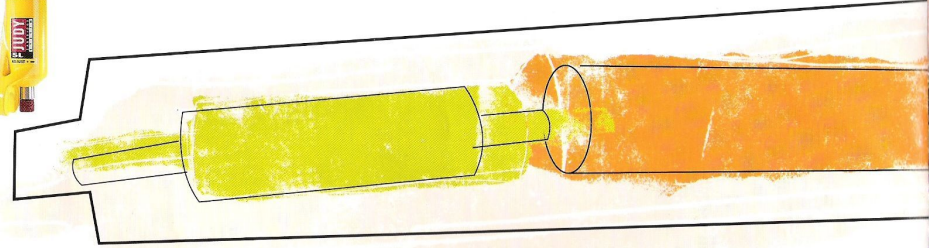


# New for 1997

Seven technical features that make the difference

### Beefy Drop-outs

Standard on JUDY SL/DH/XC  
Puts extra stiffness where it counts.



### Aluminum Cartridges

Standard on all JUDYs  
Provide improved reliability, consistent damping and better heat dissipation.



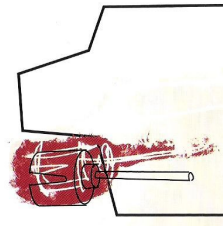
### Type II Spring System\*

Standard on all JUDYs, all INDYs, and the Road Fork  
A combination of coil spring, micro-cellular urethanes (MCU) elastomers and spring rate adjuster, this system is very active and adjusts easily to different rider body weights.



### External Adjuster Knob

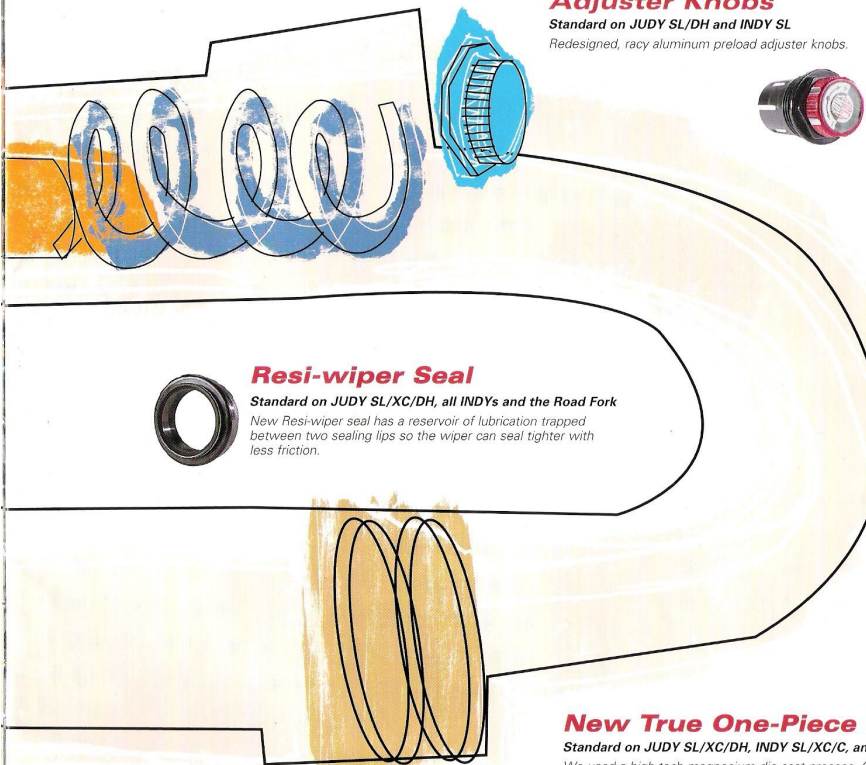
Standard on JUDY SL  
Easy damping adjustment on the trail. Machined alloy knob. No more tools required!  
Available as a tuning kit for Judy XC/DH/DHO.



### New Preload Adjuster Knobs

Standard on JUDY SL/DH and INDY SL

Redesigned, racy aluminum preload adjuster knobs.



### Resi-wiper Seal

Standard on JUDY SL/XC/DH, all INDYs and the Road Fork

New Resi-wiper seal has a reservoir of lubrication trapped between two sealing lips so the wiper can seal tighter with less friction.

### \* All About the Type II Spring System

No two riders are alike. That's why we invented a spring system with infinite adjustability. The Type II spring system consists of three pieces in each fork leg: a coil spring, a spring rate adjuster, and a micro-cellular urethane (MCU) elastomer. The spring rate adjuster is a spacer inside the coil spring, which comes in three different lengths. A change in length changes the spring rate. The shorter the rate adjuster, the softer the ride, and the longer the rate adjuster, the stiffer the ride. The springs also come in four different rates to accommodate riders ranging from 110 to 220 lbs (50-100 kg). With three different length adjusters and four spring rates, you can fine tune the performance of your fork for your unique riding style. While your RockShox fork may come with only one set of rate adjusters and coil springs inside, Type II Spring kits are available so you can adjust your fork to your weight and specific performance needs. There's also a Type II Spring kit available for your older Judy fork.

### New True One-Piece Monocoque Casting

Standard on JUDY SL/XC/DH, INDY SL/XC/C, and the new Road Fork

We used a high-tech magnesium die-cast process, CAD (computer-aided design) and FEA (finite element analysis) to produce a true, one-piece lower tube assembly—no bolts, no glue, no joints. No kidding. It's lightweight and stiff. Available with or without brake cable hanger.

## JUDY DHO

Travel: 101.6 mm

Weight: 4.2 lbs (1.90 kg)

Color: Red with cream decal

- Dual crown design
- Easton Taperwall EA70 upper tubes (28mm)
- Aluminum steerer tube
- Rigid, Boxxer-style drop-outs with 20mm diameter axle (standard wheel mounts available)
- Disk brake mounts
- Dual aluminum cartridges
- External Compression adjuster knob kit available

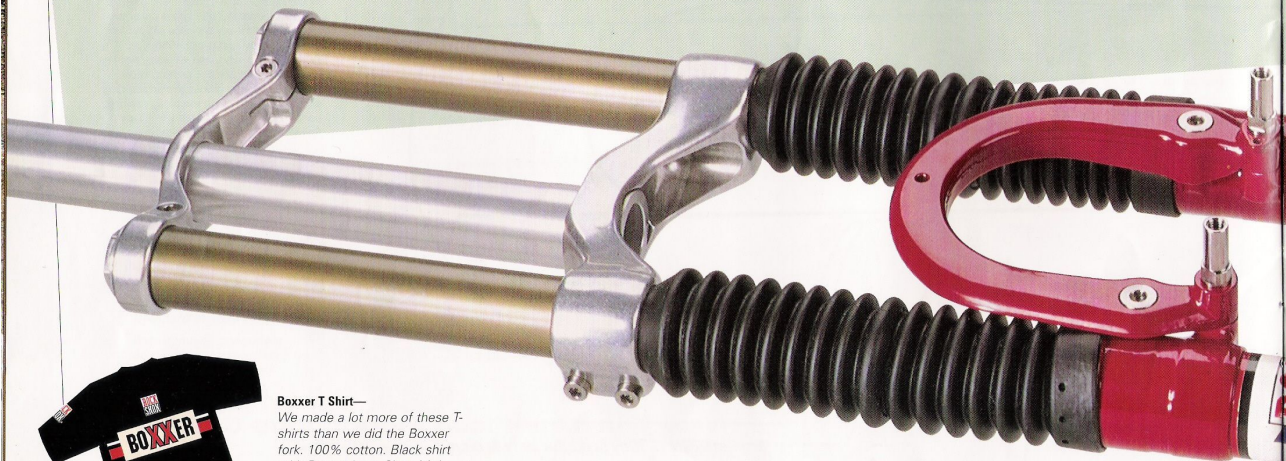
# JUDY DHO

## World Class Technology

Not backyard technology

In 1996, RockShox worked with downhill pro racers all over the world like Mike King, Leigh Donovan, and Nicolas Vouilloz to develop a world-class prototype race fork called the Boxxer. This fork was used by 20 of the top downhill World Cup racers and set a new standard in downhill suspension technology.

Now you can own a downhill suspension fork that features the same technology that the best racers in the world are using. Introducing the Judy DHO, a homologated version of our prototype Boxxer. With 20mm axle dropouts, dual crowns, and disc brake mounts, the Judy DHO is built for speed, right out of the box.



**Boxxer T Shirt**—  
We made a lot more of these T-shirts than we did the Boxxer fork. 100% cotton. Black shirt with Boxxer logo. Sizes M, L, and XL #80123

**Boxxer Decal**—#57485  
**DHO Decal**—#57488

Downhill World Champion  
Nicolas Vouilloz (France), Team GT  
riding the RockShox Boxxer

**new '97 technology**

**Type II Spring System** RockShox's dynamic pairing of coil and micro-cellular urethane (MCU) delivers an improved spring curve for a ride that's performance-plush and easily adjustable.

**Dual Aluminum Cartridges** Our new design makes these cartridges light and reliable. Better heat dissipation keeps things cool even in heated action.

**Dual Crown Design** Higher rigidity and strength for longer travel design. High crown option available for stack heights of more than 140 mm.

**20mm Axle Drop-outs** Puts extra stiffness where you need it for the extreme stresses of downhill racing.

**Disk brake compatible** For the new generation of downhill mountain bikes.

**Custom Configurations** The DHO is available in a number of custom configurations. Before ordering your DHO, read the notes below and call us to make sure you get the fork tailored to your performance requirements.

NOTE: Disc brake mounts available only with 20mm axle drop-outs; hubs for disc brakes should be purchased from the disc brake manufacturer to be compatible with the DHO 20mm axle drop-outs. RockShox Boxxer hub is only compatible with 20mm axle drop-outs and caliper brakes and is available from RockShox as an accessory.



# All New JUDY

Entirely new lower casting, spring system and damping make JUDY tons better.

**new '97 technology**

**New One-Piece Monocoque Casting** We've developed a true, one-piece casting for the lower legs and fork brace assembly so there is no glue to come loose, no bolts to add weight, and no joints to flex or come apart. Using CAD (computer-aided design) and FEA (finite element analysis), we've made the casting lighter, yet stronger and stiffer. Available with or without brake cable hanger.

**Type II Spring System** RockShox's dynamic pairing of a coil spring and micro-cellular urethane (MCU) delivers an improved spring curve for a ride that's performance-plush and easily adjustable.

**Resi-wiper Seal** Our innovative system lubricates and cleans the upper fork tubes every time the fork sees action. The result? Reduced friction for a smoother ride.

**Aluminum Cartridges (all JUDYs)** New design is strong and reliable with better heat dissipation.

**Anti-Corrosion Protection (JUDY SL/DH/XC)** Special coating protects aluminum upper tubes from the effects of corrosion.

**External Compression Adjuster Knob (JUDY SL)** Machined alloy knob. No more tools needed to adjust compression. Available as a kit for 1997 JUDY XC/DH/DHO.

**Beefy Drop-outs** Our new design puts extra stiffness where it counts.

**New Adjuster Knobs (JUDY SL/DH/XC)** Redesigned aluminum preload adjuster knobs.

## JUDY SL

Travel: 63 mm

Weight: 2.65 lbs\* (1.20 kg)

Color: RockShox yellow with black decals

- One-piece monocoque casting
- Type II spring system
- Resi-wiper seal
- Aluminum cartridge
- Anti-corrosion protection
- Press-on crown
- Compression adjuster knob
- Beefy drop-outs
- Aluminum preload adjuster knobs
- Easton Taperwall EA70 upper tubes (28mm) and steerer tube (threadless only)
- 80mm long travel kit available



**Judy T-Shirt**—  
These cards are marked for Judy. 100% cotton. Gray shirt with Judy diamonds on front and Judy cards on back. Sizes M, L, and XL. #80122

**Judy Decal**—#57484



Juli Furtado, Team GT  
US Olympic Mountain Bike Team

## JUDY DH

Travel: 80 mm standard  
Weight: 3.5 lbs\* (1.58 kg)  
Color: Red with cream decals

- One-piece monocoque casting
- Type II spring system
- Resi-wiper seal
- Dual aluminum cartridges—one for compression, one for rebound
- Stiffer crown and butted steel upper tubes
- Compression and rebound damping adjustment
- Aluminum preload adjuster knobs
- External compression adjuster knob accessory kit available



## JUDY XC

Travel: 63 mm standard  
Weight: 2.95 lbs\* (1.33 kg)  
Color: New cream with red decals

- One-piece monocoque casting
- Type II spring system
- Resi-wiper seal
- Aluminum cartridge
- Anti-corrosion protection
- Preload adjuster knobs
- Easton Taperwall EA70 upper tubes (28mm)
- 80mm long travel kit available
- External compression adjuster knob accessory kit available



## JUDY C

Travel: 63 mm standard  
Weight: 3.25 lbs\* (1.47 kg)  
Color: New cream with blue decals

- Type II spring system
- Resi-wiper seal
- Aluminum cartridge
- Press-on crown
- Preload adjuster knobs
- 28mm diameter 4130 chrom-moly steel upper tubes
- 80mm long travel kit available
- Available only as part of a complete bicycle



RockShox offers models of forks which are engineered for extreme speeds achieved by downhill racers. RockShox recommends you use a downhill-specific RockShox fork (Judy DH or Judy DH) for downhill competition.

## Mag 21 and Quadra 5—Suspension Standards

### Quadra 5

Travel: 48 mm  
Weight: 3.2 lbs\* (1.45 kg)  
Color: New black with stripes

- Proven reliable design
- Solid urethane elastomer
- Aluminum brace
- Mag lower legs
- Available only as part of a complete bicycle



### MAG 21

Travel: 48 mm  
Weight: 3.3 lbs\* (1.49 kg)  
Color: Nickelite

- Race proven history
- Air sprung-oil damped
- Compression damping adjuster knobs
- Bolt on crown
- Aluminum brace
- Mag lower legs
- 4130 steel upper tubes
- Steel steerer
- 58mm long travel kit available



### new '97 technology

**Introducing the New Indy Line—High performance at an affordable price. Light, stiff, and easy to tune.**

**New One-Piece Monocoque Casting** We've developed a true, one-piece casting for the lower legs and fork brace assembly so there is no glue to come loose, no bolts to add weight, and no joints to flex or come apart. Using CAD (computer-aided design) and FEA (finite element analysis), we've made the casting lighter, yet stronger and stiffer. Available with or without brake cable hanger.

**Type II Spring System** RockShox's dynamic pairing of a coil spring and micro-cellular urethane (MCU) delivers an improved spring curve for a ride that's performance-plus and easily adjustable.

**Resi-wiper Seal** Our innovative system lubricates and cleans the upper fork tubes every time the fork sees action. The result? Reduced friction for a smoother ride.

**Anti-Corrosion Protection (INDY SL)** Special coating protects aluminum upper tubes from the effects of corrosion.

**New Adjuster Knobs (INDY SL)** Redesigned aluminum preload adjuster knob.

### INDY C

Travel: 63 mm  
Weight: 3.25 lbs\* (1.47 kg)  
Color: New cream with blue decals

- One-piece monocoque casting
- Type II spring system (coil/solid urethane)
- Resi-wiper seal
- Press-on crown
- Preload adjuster knobs
- 4130 steel upper tubes
- Available only as part of a complete bicycle



# Deluxe Rear

## The Winning

In 1996, RockShox introduced the Deluxe line, the first rear shocks designed specifically to match the performance specifications of RockShox front suspension forks. Our Deluxe shocks provide superior stiffness, damping and rebound. With eight out of the top ten World Cup downhill racers riding a RockShox front and rear suspension system, the Deluxe line is clearly the choice of champions. For 1997, we have expanded and improved the features of our Deluxe shocks to perform best with a growing number of dual suspension bicycles available today. This year, Deluxe shocks are available on over 30 different bicycle models from over 15 different companies worldwide. If you are in the market for a full suspension bike, look for the RockShox complete front and rear suspension system featuring the Deluxe line of rear shocks.

These are just some of the companies who use both front and rear RockShox suspension on their bikes:

- Bianchi
- Centurion
- Diamond Back
- Fisher
- Giant
- GT
- Haro
- Mongoose
- Raleigh
- Santa Cruz
- Scapin
- Schwinn
- Scott
- Specialized
- VooDoo
- Yeti

World Cup Downhill leader  
Tomas Misser (Spain),  
Team Kona

### Deluxe

- Oil damped
- Nitrogen charged, floating piston
- Large diameter one piece shock body
- Tuneable shim compression and rebound damping
- Large diameter damper piston
- Hard chromed shock shaft
- Thread-in seal head
- Easy turn spring preload adjuster
- Available only as part of a complete bicycle



# Shocks—

## Formula

“It seems each year there is someone who has it all dialed in and is the guy everyone looks to as the guy to beat. Right now, that’s me. Everything is working great, especially from the sponsors who make it possible to go fast – Michelin and RockShox. They are the ones who make the bike so fast. There are a lot of guys who could be fast on that stuff.”

Mike King, Professional Downhill, Team GT  
As quoted in VeloNews, Volume 25, Number 12

### new '97 technology

#### Coupe Deluxe Adjustability

External damping adjustment and easy-to-turn spring preload collar allow you to adjust your shock on the trail as the terrain changes.

#### Super Deluxe Maximum Adjustability

The winning combination of adjustable rebound damping and the new adjustable compression damping makes the Super Deluxe easily customized with the simple twist of a knob.

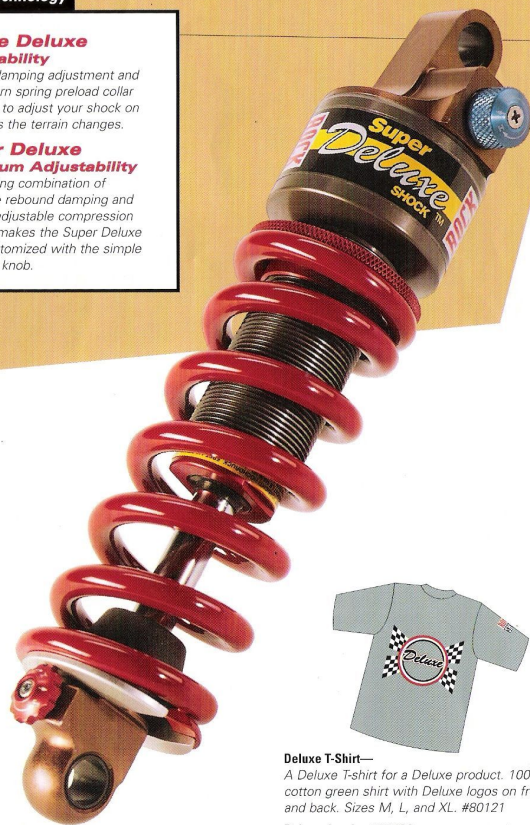
### Coupe Deluxe

- Oil damped
- Nitrogen charged, floating piston
- Externally adjustable rebound damping
- Hard chromed shock shaft
- Thread-in seal head
- Easy turn spring preload adjuster



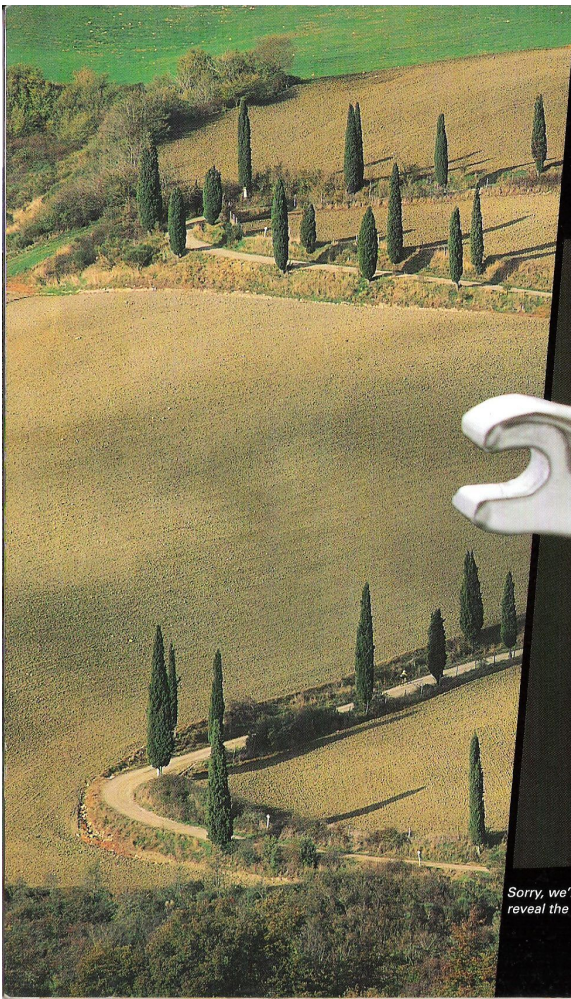
### Super Deluxe

- Oil damped
- Nitrogen charged, concentric floating piston
- Externally adjustable rebound damping
- Externally adjustable compression damping
- Hard chromed shock shaft
- Hard anodized shock body



**Deluxe T-Shirt—**  
A Deluxe T-shirt for a Deluxe product. 100% cotton green shirt with Deluxe logos on front and back. Sizes M, L, and XL. #80121

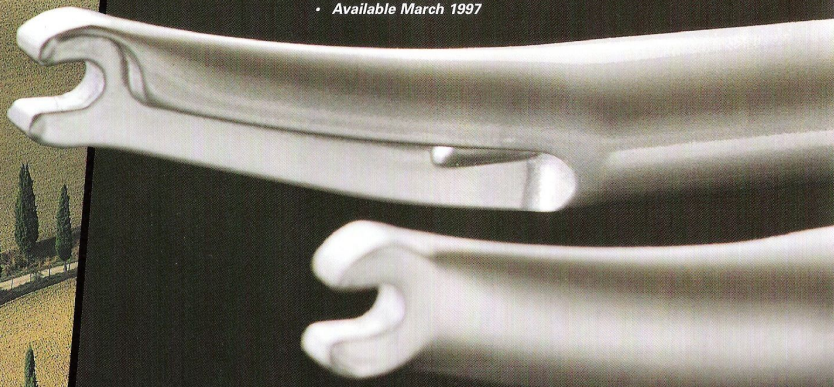
**Deluxe decal—**#57486



## New Road Fork

Travel: 30 mm  
Weight: 2.0 lbs (0.9 kg)

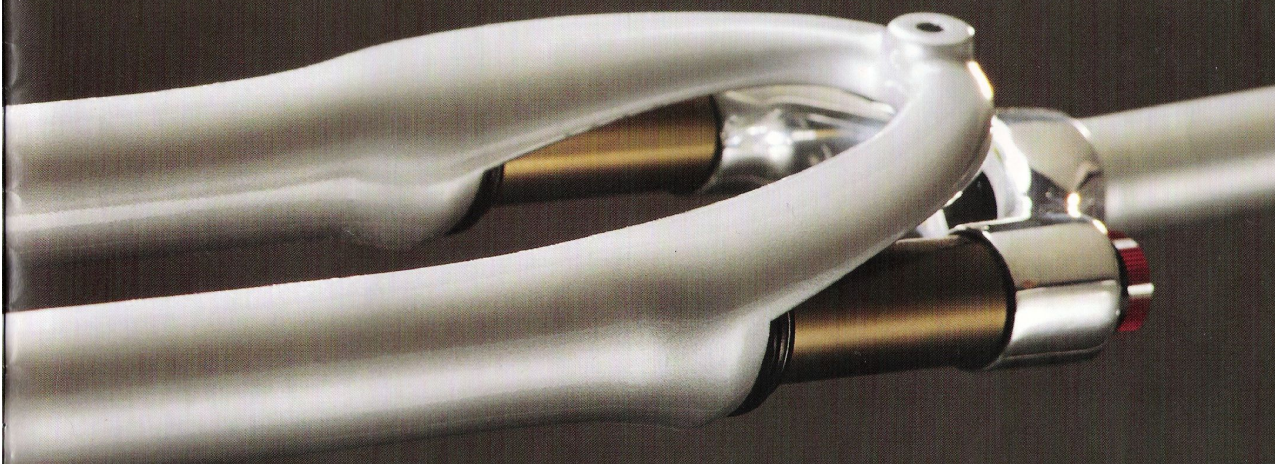
- True one-piece magnesium lower assembly
- Type II spring system
- Narrow, aerodynamic design
- Resi-wiper seal
- Caliper brake mounts
- Sleek, press-on crown design
- Easton Taperwall EA70 upper tubes
- Easton Taperwall EA70 steerer tube (threadless only)
- Full lockout option (no bobbing on sprints and climbs)
- Available March 1997



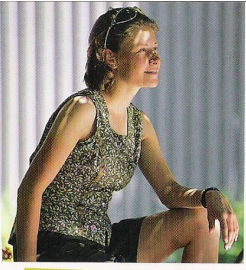
Sorry, we're not willing to reveal the location of this shot.

# On the Road

with RockShox

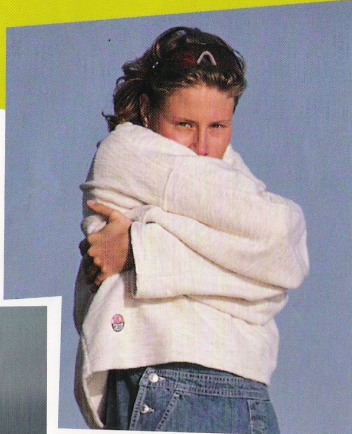
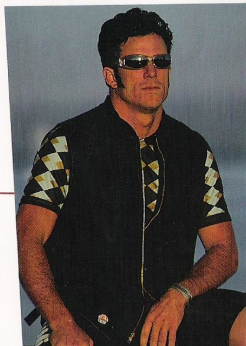


*It is only a matter of time, wouldn't you say, before road riders understand what mountain bikers have known since 1989: Suspension works. And because it works, you can ride faster, stronger, longer. Introducing the new road fork from RockShox. The ultimate in road performance. We've combined our knowledge of mountain bike technology with feedback from elite road racers to develop a revolutionary new suspension system that meets the specific needs of a road cyclist. Careful consideration has been given to ride performance, aerodynamic efficiency, light weight, and styling. We've also included such features as Type II springs and a lockout option for sprinting and climbing. The new road fork from RockShox. Available March 1997.*



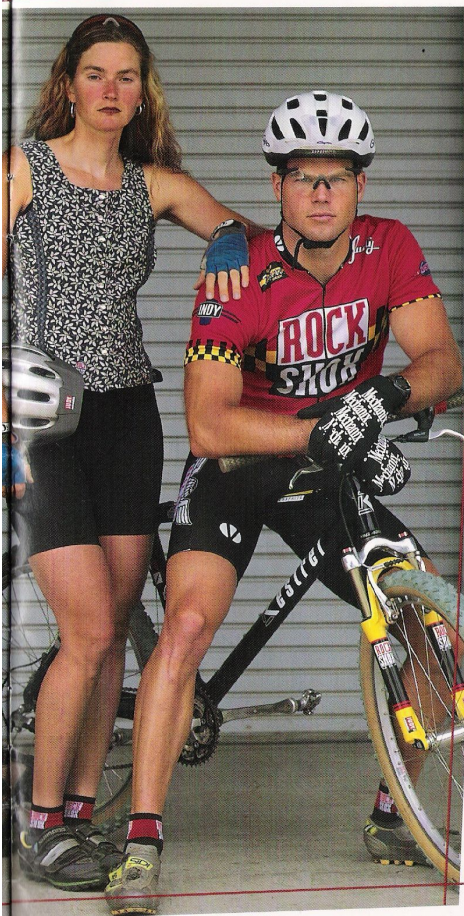
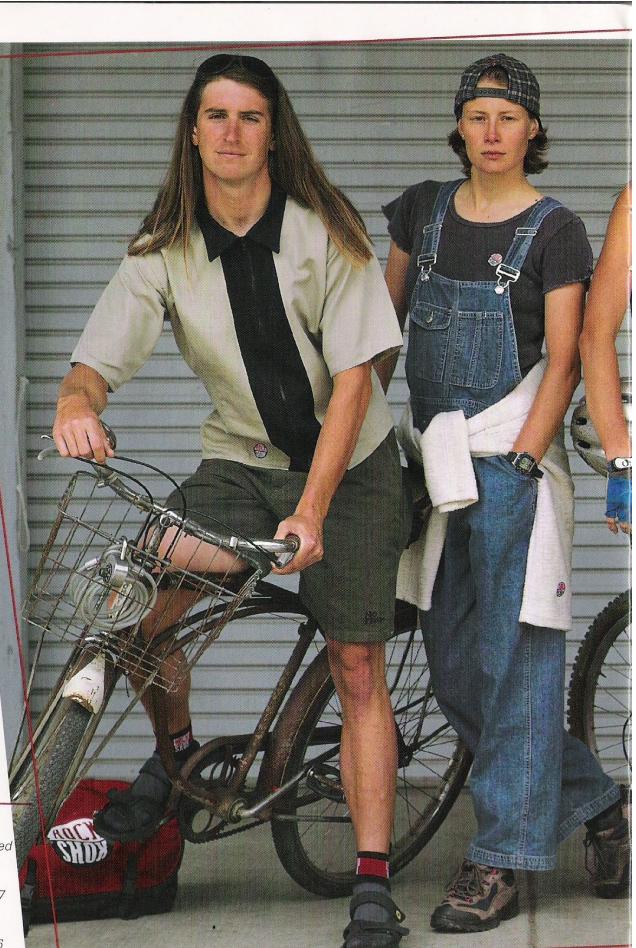
**Women's 100% Cotton Jerseys**—Preshrunk. Fitted side panels. Contrasting trim. Pearl snaps. Elasticized rear pocket. Sizes S, M, L, and XL. Sleeveless green print (this page): #80115. Sleeveless blue print (opposite page): #80109.

**Black Twill Vest**—100% cotton. Preshrunk. Full length brass zipper. Adjustable side tabs. Rear zip pocket. Unisex S, M, L, and XL. #80111

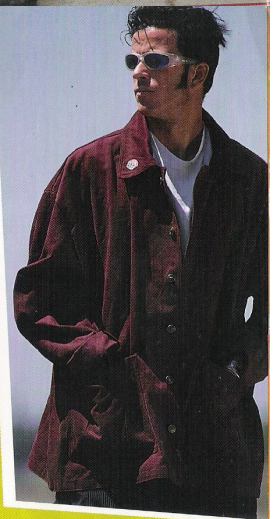
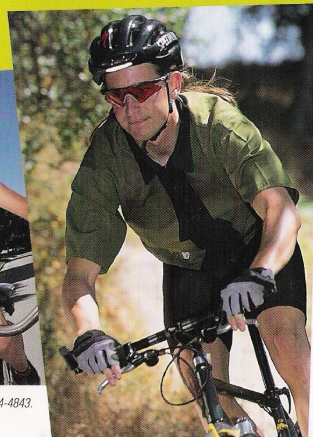


**Chenille Pullover**—Mostly cotton. Embroidered logo. Unisex M, L, XL, and XXL. #80110

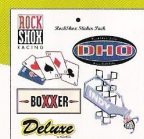
**Men's Bengeline Jerseys**—100% cotton. Preshrunk. Fitted side panels. Full-length YKK zipper. Rear elasticized pocket. Sizes M, L, XL, and XXL. Short sleeve cream with black trim (this page): #80117. Short sleeve olive with black trim (opposite): #80108. Sleeveless gold with black trim (opposite): #80107. Sleeveless cream with black trim (not shown): #80116.



**RockShox Lycra Shorts**—8-panel. Top-quality chamois. Black with white and red logo. Sizes S, M, L, and XL. #80128



**Heavy Twill Jacket**—100% cotton. Cut Xtra big. Two deep front pockets. Industrial buttons. Maroon. Sizes M, L, XL, and XXL. #80112



**Sticker Pak**—Get all 5 new logos plus the traditional ROCK SHOX Racing Logo on one single sheet. #57489

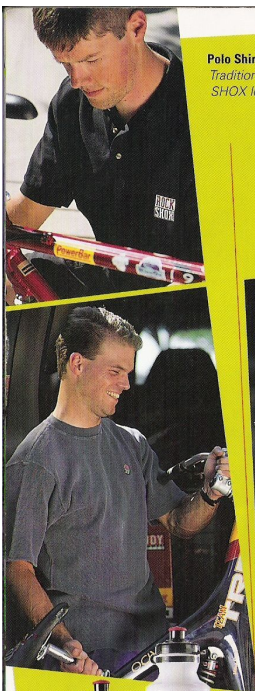
**ROCK SHOX**  
**garb**

As a matter of choice

Ride in it. Race in it. Relax in it. Lycra or cotton, logos or prints, we have it all. So look for Garb and make your own choice about what to wear.

The oversized cut of our casual Garb allows generous airflow to help keep you cool. We also made sure that there are a lot of pockets for toys. When the competitive juices flow, pull out your Argyle or Team race jerseys. Traditional cut, to-the-navel zip, mesh underarms, and elasticized rear pockets.

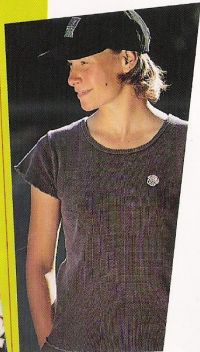
To find RockShox Garb, visit your local bike shop or call us at: (800) 404-4843.



**Polo Shirt—**  
Traditional 100% cotton. Embroidered ROCK SHOX logo. Black. Sizes M, L, and XL. #80129

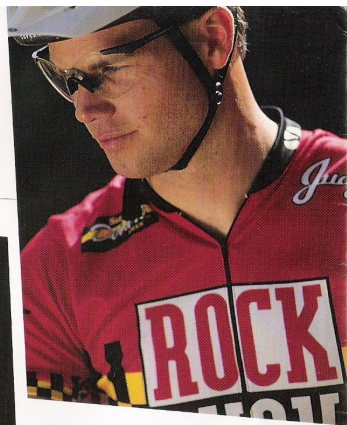
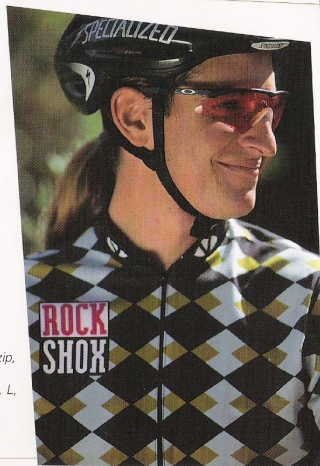


# garb



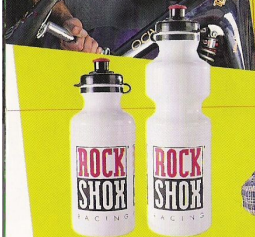
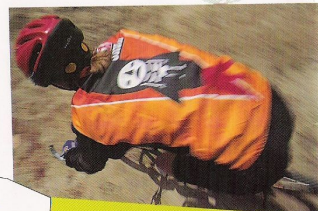
**Waffle Shirts—**  
100% cotton. Short sleeve. Embroidered ROCK SHOX logo. Women's fem cut. Plum. Sizes M and L. #80108.  
Men's full cut. Blue. Sizes L and XL. #80105

**Argyle Race Jersey—**  
In minty fresh colors. ROCK SHOX logo on front and back. Mesh underarms, to-the-navel zip, elasticized rear pockets. Mint, light blue and black. Sizes S, M, L, XL, and XXL. #80126



**RockShox Team Race Jersey—**  
RockShox style with all our logos. Mesh underarms, to-the-navel zip, elasticized rear pockets. Red. Sizes S, M, L, XL, and XXL. #80127

**Rocket Boy Riding Shell—**  
Lightweight Poly. Mesh sides. Full zip. Sizes S, M, L and XL. #80114



**H<sub>2</sub>O Bottles—**With the ROCK SHOX logo.  
Regular #ABOTTLE  
Tall Boy #ABOTTLE-LRG



**Ball Caps for your head—**  
All with ROCK SHOX logo.  
Plaid flannel. #AHAT-F  
Gray wool, with Judy logo on back. #AHAT-W  
Black twill, velcro back. #AHAT

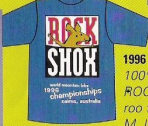
**Fleece Beanie—**  
Black with red and white stripes and the ROCK SHOX logo. One size fits most heads. #80119



**RockShox Logo T-Shirts—**  
A basic requirement for every one's wardrobe. 100% cotton. Sizes M, L, and XL.  
Black #ARACINGTB  
White #ARACINGT



**RockShox Socks—**Look clean even when they're not. The AIR•E•ATOR wicks away sweat. Gray with black and red striped cuffs. Sizes M and L. #SHOCKSOX



**1996 World Championship T-Shirt—**  
100% cotton blue shirt with upside-down ROCK SHOX logo on the front and a little roo from down under on the back. Sizes M, L, and XL. #80124

# Worldwide Distributors

**Africa**  
**CoolHeat S.A.**  
Phone (011) 493 7430  
FAX (011) 493 1794

**Argentina**  
**Broni S.A.**  
Phone (01) 235 3000  
FAX (01) 292 4453

**Australia**  
**Sports Plus**  
Phone (02) 9360 4644  
FAX (02) 9331 6545

**Austria**  
**Barisitz Austria**  
Phone 0512 392287  
FAX 0512 394519

**Belgium**  
**VERTEX Cycle Systems BV**  
Phone (31) 23 5718184  
FAX (31) 23 5718606

**Brazil**  
**Pacific Bicycle Company**  
Phone (011) 816 2249  
FAX (011) 816 0544

**Canada**  
**Canada Ltd.**  
Phone (403) 273 1244  
FAX (403) 248 1221

**Chile**  
**Bicicletas Belda**  
Phone 56 32 881799  
FAX 56 32 978799

**Colombia**  
**Disandina Ltda.**  
Phone (5763) 373952  
FAX (5763) 372165

**Costa Rica**  
**Cobicondor S.A.**  
Phone (506) 239 1540  
FAX (506) 239 2610

**Costa Rica**  
**SPC Bicicletas**  
Phone (506) 296 3383  
FAX (506) 289 7013

**Czech Republic**  
**velo GEPARD Ltd.**  
Phone 3299251  
FAX 4316189

**Denmark**  
**Ettol**  
Phone 86 99 2000  
FAX 86 99 2038

**Ecuador**  
**Bici Sport Sierra**  
Phone (593) 225 379 5  
FAX (593) 225 477 1

**Finland**  
**Mr. Cool OY**  
Phone 30 320817  
FAX 30 320609

**France**  
**Philamy S.A.**  
Phone 92 87 31 57  
FAX 92 72 60 70

**Germany**  
**Sport Import GmbH**  
Phone (49) 44 05 92800  
FAX (49) 44 05 70400

**Greece**  
**Gatsoulis**  
Phone 01 2512 779  
FAX 01 2533 960

**Guatemala**  
**Bike Center**  
Phone (502) 2 994856  
FAX (502) 2 994855

**Holland**  
**VERTEX Cycle Systems BV**  
Phone (31) 23 5718184  
FAX (31) 23 5718606

**Hong Kong**  
**Flying Ball Bicycle Co.**  
Phone (852) 23813661  
FAX (852) 23974406

**Israel**  
**C.T.C. Ltd.**  
Phone 03 5372024  
Fax 03 5379247

**Italy**  
**Motorquality**  
Phone 02 249511  
FAX 02 476420

**Luxembourg**  
**VERTEX Cycle Systems BV**  
Phone (31) 23 5718184  
FAX (31) 23 5718606

**Mexico**  
**Grupo Scandl**  
Phone 52 52 81 14 39  
FAX 52 52 81 27 21

**Japan**  
**Yoshigai Corporation**  
Phone (81) 67 217 051  
FAX (81) 67 242 062

**New Zealand**  
**W.H. Worrall & Co. Ltd.**  
Phone 09 6303901  
FAX 09 6303839

**Norway**  
**Foss Sykler**  
Phone 22 382636  
FAX 22 382644

**Panama**  
**Distribuidora Rali, S.A.**  
Phone (507) 263 4136  
FAX (507) 261 9123

**Peru**  
**Fabisa de Bicicletas S.A.**  
Phone 51 12 651599  
FAX 51 14 716373

**Poland**  
**Giant Polska**  
Phone 0 22 6451434  
FAX 0 22 6451436

**Portugal**  
**Bicimax, Artigos Desportivos, Lda.**  
Phone/Fax (351) 44 553276

**St. Maarten**  
**Tri-Sport International**  
Phone (5995) 43462  
FAX (5995) 54385

**Singapore**  
**Treknology Bikes 3**  
Phone 455 0551  
FAX 441 2967

**Slovenia**  
**Proloco Trade**  
Phone (66) 42 24090  
FAX (66) 42 12169

**Spain**  
**Motor Dealer**  
Phone 91 6377097  
FAX 91 6377264

**Sweden**  
**Hallman Sports**  
Phone 018 561600  
FAX 018 132426

**Switzerland**  
**MTB Cycletech, A.G.**  
Phone 0 800 807 007  
FAX 31 9723566

**United Kingdom**  
**Caratti Sport Limited**  
Phone 01454 201700  
FAX 01454 318611

**Taiwan**  
**Biketech Co., Ltd.**  
Phone 886 2 6945806  
FAX 886 2 9461333

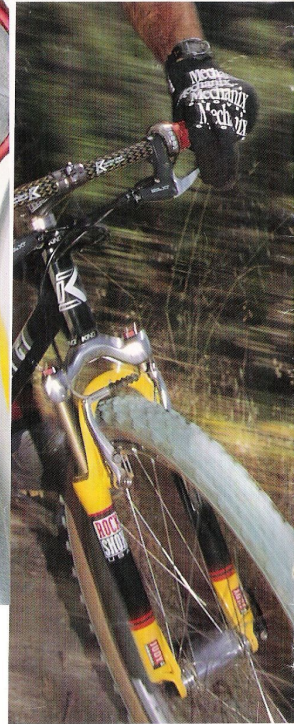
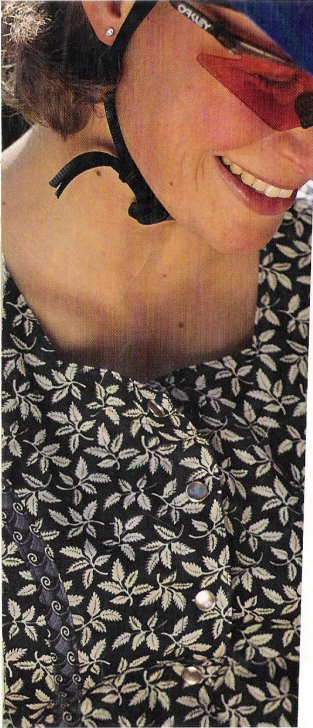
**Thailand**  
**Probike Co., Ltd**  
Phone 254 1077  
FAX 254 1078

**USA**  
**RockShox, Inc.**  
401 Charcot Ave.  
San Jose, CA 95131  
Dealer Sales  
(800) 677-7177  
Tech Services  
(800) 694-0668  
Questions & Catalogs  
(800) 404-4843  
Other People  
(408) 435-7469  
World Wide Website  
www.rockshox.com

**Venezuela**  
**Bicimont**  
Phone/FAX 58 27 525 126

To order this catalog, ask for part #60428.

RockShox, Inc.  
401 Charcot Avenue  
San Jose, CA 95131  
(408) 435-7469  
www.rockshox.com



**Photo Credits**

Race Photos: Matt Lanning (3)  
Pablo Catllá (1)  
Mark Doolittle (1)  
Malcom Fearon (1)  
Scenic Photos: all by Dirk Belling  
Product photos: Dirk Belling and  
Leigh Woodhead