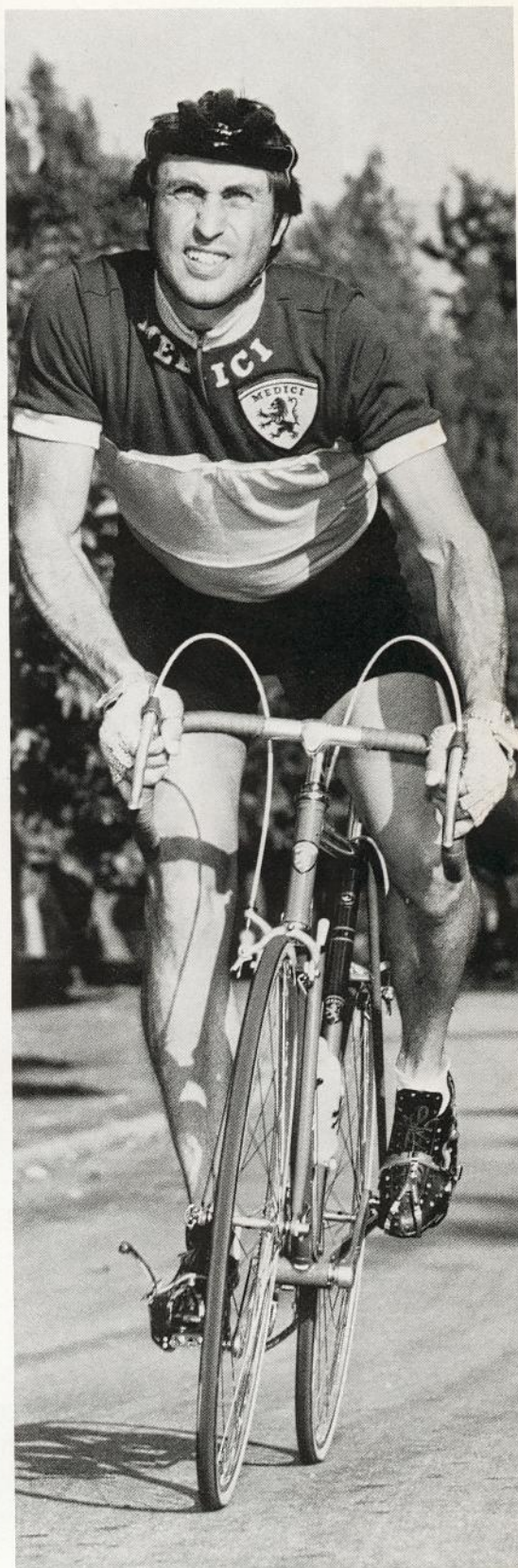
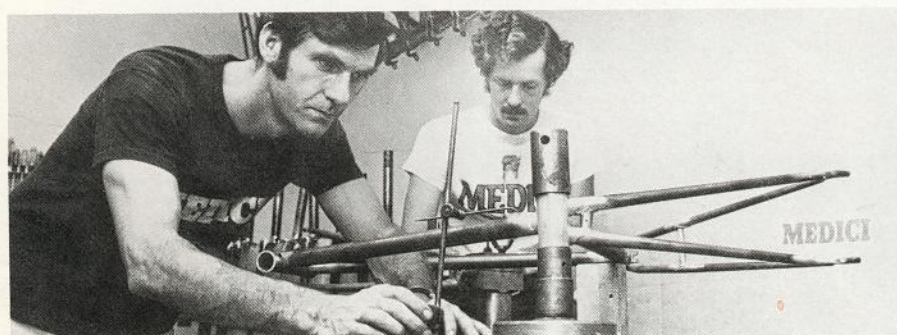
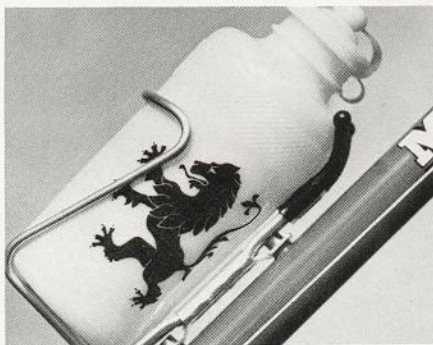
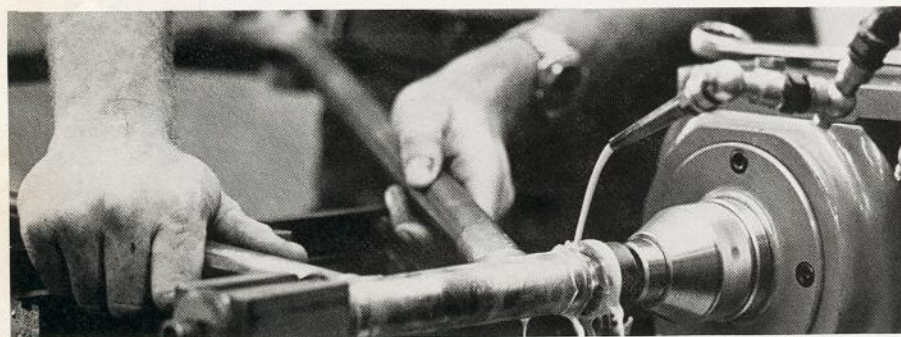


NEW
Superlight Black Pedals
Super Record Chainrings
Super Record Seat Post
All Standard on the 1980 MEDICI



MEDICI
1980 BICYCLES

Go for it!!!-the 1980 MEDICI



MEDICI BICYCLES

In 1978, the MEDICI road racing bicycle made its appearance in the U.S.A. Manufactured in Los Angeles, the name MEDICI was selected as being illustrative of the dedicated craftsmanship of the Italian renaissance.

A product of experienced, professionally trained experts, MEDICI is designed and manufactured along classic Italian racing lines. A production bicycle, it is constructed in optimum angle and tube length for each of its 18 seat tube sizes between 46.5 and 65 cm.

Handcrafted in the most fully equipped factory of its kind in the world, and machine quality controlled, these bicycles employ all of the most sophisticated current technology in the field.

MEDICI bicycles are built of brass-brazed Columbus SL & SP steel tubing, depending on seat tube length. They feature:

- Eyeletted seat stays with maximum lug contact
- Smooth indent-free chain stays with special allowance for complete freewheel selection
- Brazed-on guides, stops and fixtures
- Specialized bridge reinforcing
- Investment cast lugs, fork crown and bottom bracket shell
- Cross-grooved drop-outs

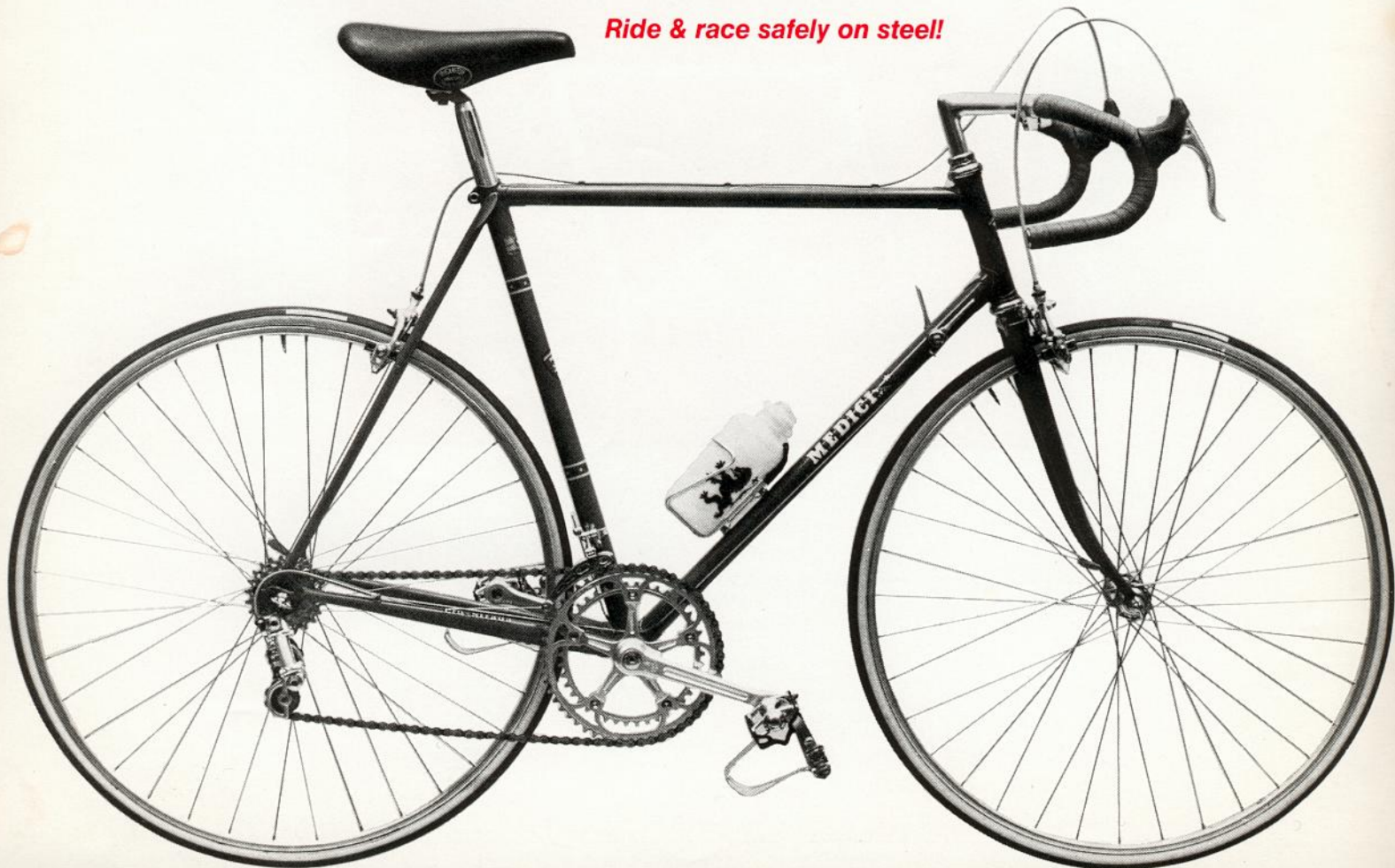
No short-cuts are taken during filing, sand blasting, pickling (acid bath) and paint priming. Colors are lustrous, oven-cured and rendered safe and beautiful by special prismatic decals and clear coat top lacquer.

Frames are available in the seven 1980 colors or in "completed" ready-to-ride form, as shown in the specifications.

Fitments for down tube derailleur shift levers are provided as a matter of course but stops for handlebar shift cables are available upon specific order at no additional cost.

All sizes of MEDICI, in each of the 7 colors, are in STOCK on both the East and West Coast of the U.S.A. Delivery is immediate!

Ride & race safely on steel!





Specifications

MEDICI

STEELWORK

Slotted steering column and bottom bracket are Italian threaded. All bridges and supports are separately reinforced and stiffened.

Frame & Fork	Columbus double butted SP & SL (according to size)
Seat & Chain Stays	Spaced to accept conventional 5-speed freewheel. 6-speed design available on special order at no additional cost.
Lugs	Rexart investment cast
Bottom Bracket Hanger	Cinelli
Fork Crown	Haden
Dropouts	Rexart slotted, investment cast

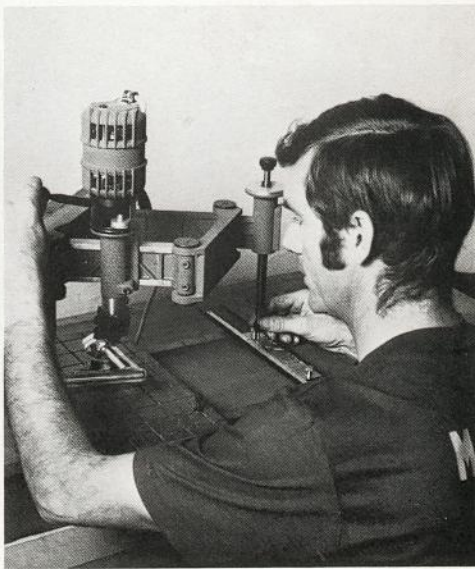
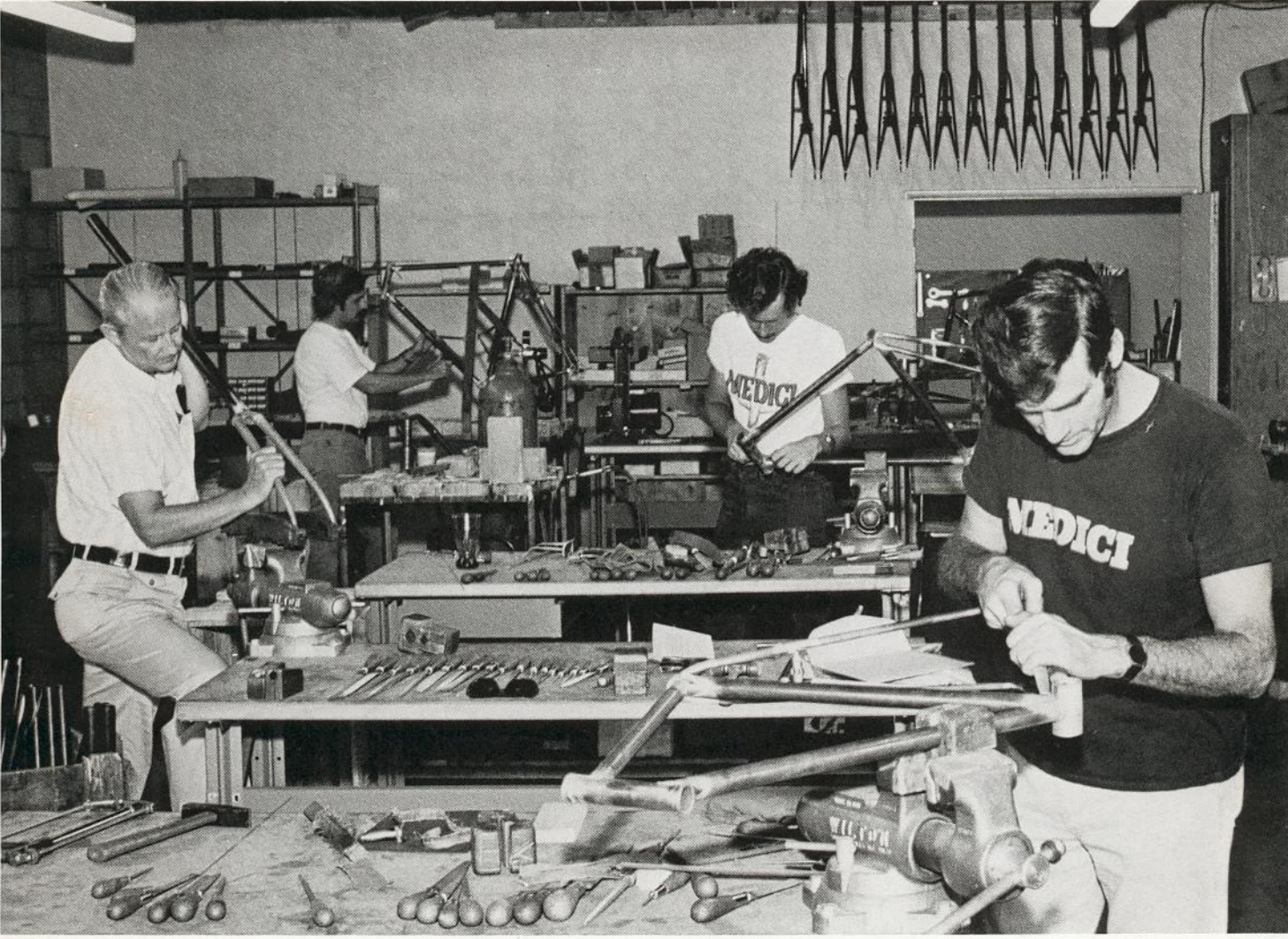
COMPONENTS

All Italian threading except as noted. Campagnolo Super Record equipment other than those items mentioned as standard is available at additional cost.

Headset	Campagnolo Nuovo Record
Brakes	Campagnolo Nuovo Record
Bottom Bracket	Campagnolo Nuovo Record
Cranks	Campagnolo Nuovo Record 170 mm to 59cm 175mm over 59cm
Chainrings	Campagnolo SUPER RECORD 42/52T to 59cm 42/53T over 59cm
Derailleurs	Campagnolo Nuovo Record (front & rear)
Pedals	Campagnolo Superlight BLACK Pedals
Hubs	Campagnolo Nuovo Record 36 hole, low flange, BSA thread
Seat Post	Campagnolo SUPER RECORD 180mm long—27.2mm diameter
Seat Post Bolt	Hague Stainless Steel
Rims	Super Champion or Nisi
Spokes	DT, 14 straight gauge
Tires	Clement Silk
Freewheel	Regina Oro, BSA thread, splined body
Chain	Regina Oro
Toe Clips	Christophe spring steel— short, normal or long— according to frame size
Toe Straps	Binda, with buttons
Water Bottle	AL•E plastic with MEDICI logo
Water Bottle Cage	Alloy or steel—to choice
Pump	Silca frame—fit, color matched to bicycle frame with Campagnolo "blue foot" steel head
Saddle	Avocet or Unicanitor #4
Stem	Cinelli 1/A or Triple T length according to frame size
Handlebar	Cinelli #64 or Triple T Grand Prix taped with chrome plugs

BRAZE-ON FEATURES

- A. Top Tube brake cable tunnels (3)
- B. Campagnolo Bottom Bracket derailleur cable guides (2)
- C. Campagnolo right rear chain stay cable stop (1)
- D. Down tube water bottle cage fittings (2)
- E. Down tube derailleur guides (2)
 - 1. Shift lever bosses, or
 - 2. Fingertip control cable stops



ALL SIZES IN STOCK—IMMEDIATE DELIVERY

PAINT & FINISHING

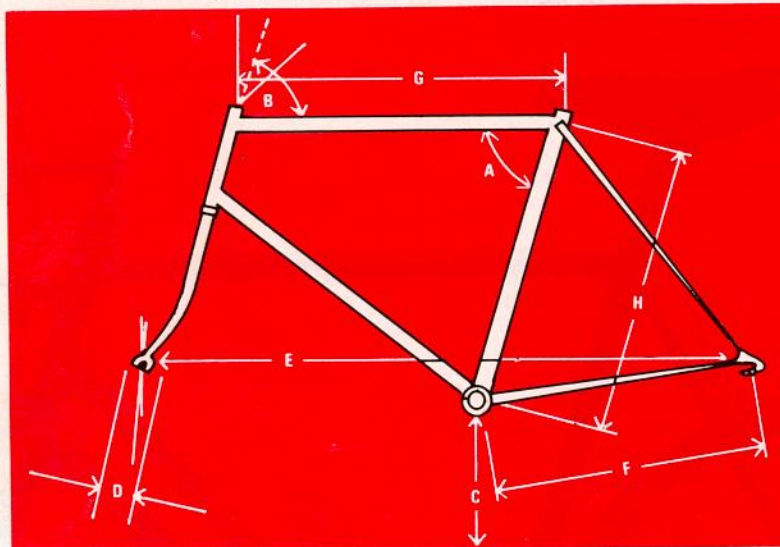
- A.) Standard 1980 colors available are:
 - 1.) Deep Metallic Blue
 - 2.) Sun Gold
 - 3.) Star Silver
 - 4.) Candy Apple Red
 - 5.) Dense Gloss Black
 - 6.) Brilliant Sea Green
 - 7.) California Burgundy
- B.) Front dropouts are chromed faced
- C.) Fork crown is chromed
- D.) A fully chromed fork is optionally available
- E.) Lugs and some details are picked out in yellow
- F.) Decals are head and seat tube, world bands, and down tube identification
- G.) Paint procedure: Acrylic primer, two coats of color, decals, clear overcoats. Each application is separately oven cured.
- H.) We shall copy, so far as we are technically able, any paint chip submitted as a custom option at additional cost.

SIZES

Frames are manufactured in seat tube length of from 49cm to 65cm (19 1/4" to 25 1/2") in increments of one cm (0.4"). In addition, a limited number of 46.5cm (18") frames are available at extra cost.

CONFIGURATION

- A.) Angle between top tube and seat tube: 73 to 75 according to frame size
- B.) Angle between top tube and head tube: 73 to 75 according to frame size
- C.) Bottom Bracket height from ground: 267mm
- D.) Fork blade rake: 48mm
- E.) Wheelbase: 38 1/2" to 40 1/4" according to frame size
- F.) Chainstay: 16 1/4 inches
- G.) Top Tube: 52cm to 60cm according to frame size. From 46.5 to 55cm top tube is slightly longer than seat tube. From 56cm to 65cm top tube is slightly shorter than seat tube.
- H.) Seat Tube: 46.5cm to 65cm



PRICES

MEDICI Bicycle equipped as detailed above.....	\$1,200.00
Fully chromed fork	add 40.00
Special paint.....	add 40.00
Special 46.5 seat tube.....	add 50.00
MEDICI frame & fork with color matching pump	460.00
Campagnolo Headset installed.....	add 40.00
Campagnolo Bottom Bracket installed	add 40.00
Special paint.....	add 40.00
Special 46.5 seat tube.....	add 50.00



In the East:

Rexart Cyclery
 1183 West Side Avenue
 Jersey City, N.J. 07306
 (201) 792-6350 Telex 12-7737

In the West:

Medici Bicycle Company
 3238 Union Pacific Ave.
 Los Angeles, Calif. 90023
 (213) 262-3212 Telex 69-1645