



The
1996
Litespeed
Titanium
Bicycles

"The State Of The Art."

A phrase that indicates that an item or technology is of the highest caliber in its given category. At Litespeed, our goals are not to just be "State Of The Art," but to redefine it, to consistently go beyond what is currently considered the best one can do. Every day we focus on applying our 40-plus years of metal fabricating experience to advance the "State Of The Art" in cycling technology.

state of the

art



Every Litespeed model is, without question, the absolute leader in its respective category. The Vortex and Tellico are the only bicycles in the world that incorporate an all 6Al-4V titanium tubeset. This titanium alloy possesses a strength-to-weight ratio approximately 30% greater than 3Al-2.5V titanium (the standard alloy used by quality U.S. framebuilders). These bicycles have the best strength-to-weight ratio in the world, regardless of material. The Vortex and Tellico redefine "State Of The Art" for UltraLight high performance frames.

Litespeed's unique cold-worked Tapered/Butted 3Al-2.5V titanium tubeset, used most extensively in our Ocoee, Ocoee F/S, Ultimate, and Catalyst models, is the most successful 3Al-2.5V tubeset available. More World and National Championships have been garnered aboard this cold-worked tubing than all other titanium tubing styles combined.

In the high tech world of aerodynamics, Litespeed continues to push the boundaries of accepted technology. Extensive wind tunnel testing proves the Litespeed Blade and Tachyon are two of the most aerodynamic production bikes in the world. Consistent triathlon victories and a 1995 40 Kilometer Time Trial National Championship confirm these bicycles to be "State Of The Art".

Litespeed is the recognized world leader in titanium frames. We set the standards that all others strive to meet. Whatever your needs: Road, off-road, triathlon, time-trialist, Litespeed gives you only the best. It's what sets us apart. It's what you covet. It's "State Of The Art." And beyond.





The Bicycles

"...an incredibly lightweight bike that will make you a better racer the day you buy it."

Zapata Espinoza, Editor,
Mountain Bike magazine

"Litespeed's revolutionary 6Al - 4V titanium Tellico will hook you from the get go."

Jackson Lynch, Associate Editor,
MTB magazine

Litespeed's evolution of the remarkable 6Al - 4V titanium tubeset allows our craftsmen to create a frame that has redefined the term "lightweight". This alloy's incredible strength-to-weight ratio also insures that there is absolutely no sacrifice in strength.

To guarantee precise handling, the Tellico borrows its geometry from our race-proven, suspension specific Ocoee mountain frame. This aggressive geometry combined with the ultra-light 6Al - 4V tubeset produces a frame that accelerates, climbs, and descends better than ever thought possible.

Photo by Tom Moran

SIZE CENTER TO TOP	TOP TUBE LENGTH	HEAD TUBE ANGLE	SEAT TUBE ANGLE	CHAIN STAY LENGTH	WHEEL BASE	FORK RAKE	STAND OVER HEIGHT	BOTTOM BRACKET HEIGHT	FRONT CENTER LENGTH	HEAD TUBE LENGTH	WEIGHT
12 in	21.25 in	71°	73°	16.93 in	39.8 in	1.6 in	25 in	11.75 in	23.0 in	4.0 in	2.75 lbs
14.5 in	21.25 in	71°	73°	16.93 in	39.8 in	1.6 in	27 in	11.75 in	23.0 in	4.0 in	2.79 lbs
16 in	21.75 in	71°	73°	16.93 in	40.2 in	1.6 in	28.1 in	11.75 in	23.5 in	4.0 in	2.84 lbs
17 in	22.25 in	71.5°	72.5°	16.93 in	40.6 in	1.6 in	28.8 in	11.75 in	23.8 in	4.8 in	2.91 lbs
18 in	22.75 in	71.5°	72.5°	16.93 in	41.1 in	1.6 in	29.7 in	11.75 in	24.4 in	5.0 in	3.05 lbs
19 in	23.25 in	71.5°	72.5°	16.93 in	41.5 in	1.6 in	30.6 in	11.75 in	24.8 in	5.5 in	3.10 lbs
20 in	23.75 in	71.5°	72.5°	16.93 in	42.1 in	1.6 in	31.6 in	11.75 in	25.4 in	6.2 in	3.17 lbs



- Litespeed exclusive custom 6Al - 4V titanium tubeset
- CAD designed/CNC machined vertical dropouts
- Suspension Specific geometry
- 6Al - 4V titanium, 68 mm English threaded bottom bracket shell
- Dual water bottle mounts with titanium fasteners
- 1 3/8 inch clamp-on top pull front derailleur
- Finishes: Traditional brushed
- Available groups: Shimano XTR, XT/LX

THE TELICO



The Ocoee is the workhorse in the Litespeed stable of mountain bikes. From the mountains of Tennessee to the rigors of the NORBA and GRUNDIG World Cup circuit, this bike has proven itself able to sustain violent levels of off-road punishment. This high performance mountain frame uses our custom 3Al-2.5V cold-worked, swaged, tapered/butted tubeset to keep things light and strong, while S-bend seatstays provide additional stiffness and better braking modulation. New for 1996: Tapered/ovalized oversized asymmetric chainstays that yield excellent crank-arm/tire clearance while maintaining proper chain-line. The oversized tube further intensifies rear end stiffness, and a suspension specific geometry never allows headtube angles to grow too steep or bottom bracket height too low during front suspension compression.

The Litespeed Ocoee delivers no-compromise quality and performance in a package that mirrors all the excitement and power of the Ocoee River itself.

SIZE CENTER TO TOP	TOP TUBE LENGTH	HEAD TUBE ANGLE	SEAT TUBE ANGLE	CHAIN STAY LENGTH	WHEEL BASE	FORK RAKE	STAND OVER HEIGHT	BOTTOM BRACKET HEIGHT	FRONT CENTER LENGTH	HEAD TUBE LENGTH	WEIGHT
12 in	21.25 in	71°	73°	16.93 in	39.8 in	1.6 in	25.0 in	11.75 in	23 in	4 in	3.09 lbs
14.5 in	21.25 in	71°	73°	16.93 in	39.8 in	1.6 in	27.0 in	11.75 in	23 in	4 in	3.14 lbs
16 in	21.75 in	71°	73°	16.93 in	40.2 in	1.6 in	28.1 in	11.75 in	23.5 in	4 in	3.24 lbs
17 in	22.25 in	71.5°	72.5°	16.93 in	40.6 in	1.6 in	28.8 in	11.75 in	23.8 in	4.8 in	3.28 lbs
18 in	22.75 in	71.5°	72.5°	16.93 in	41.1 in	1.6 in	29.7 in	11.75 in	24.4 in	5 in	3.41 lbs
19 in	23.25 in	71.5°	72.5°	16.93 in	41.5 in	1.6 in	30.6 in	11.75 in	24.8 in	5.5 in	3.48 lbs
20 in	23.75 in	71.5°	72.5°	16.93 in	42.1 in	1.6 in	31.6 in	11.75 in	25.4 in	6.2 in	3.56 lbs
21 in	24.25 in	71.5°	72°	16.93 in	42.4 in	1.6 in	32.3 in	11.75 in	25.7 in	6.5 in	3.62 lbs
22 in	24.75 in	71.5°	72°	16.93 in	42.8 in	1.6 in	33.1 in	11.75 in	26.1 in	6.8 in	3.68 lbs

Photo by Tom Moran



- Litespeed custom 3Al - 2.5V tapered/butted titanium tubeset
- Asymmetric oversized tapered/butted chainstays
- S-Bend seatstays
- Suspension Specific geometry
- 6Al - 4V titanium, 68 mm English threaded bottom bracket shell
- Dual water bottle mounts with titanium fasteners
- 1 3/8 inch clamp-on top pull front derailleur
- CAD designed/CNC machined vertical rear dropouts
- Finishes: Traditional brushed, Brilliant polished
- Available groups: Shimano XTR, XT/LX



The technology of full suspension basically allows the rider to achieve a level of performance that a rigid bike simply cannot match. Enhanced control, smoother ride, and a greater margin of safety are all the result of functional full suspension. The Ocoee F/S excels in all of these areas.

The Litespeed Vari-Link system is a fully active, multi-pivot system which employs a strategic array of technology. The walking beam linkage allows the seatstays to remain in a standard position. This eliminates any cantilever brake routing hassles. The rising rate aluminum linkage arms work in perfect harmony with the Fox Alps 4R adjustable Air Shock to provide a precision-balanced rear damping system. At the heart of all this is Litespeed's exclusive 6Al - 4V bi-axial formed titanium downtube. This massive 2 inch diameter, thin-wall tube helps keep the frame positively rigid, thus allowing the suspension components to function without messy frame flex.

New enhancements for 1996 include needle bearings with port injection lubrication at both main frame pivot points for longer life with less maintenance, larger chainstays and beefier Vari-Link arms to provide a stiffer rear end assembly.

The Ocoee F/S is a meticulous combination of suspension systems and State Of The Art frame dynamics working together to deliver flawless, hassle-free full suspension performance.

SIZE CENTER TO TOP	TOP TUBE LENGTH	HEAD TUBE ANGLE	SEAT TUBE ANGLE	CHAIN STAY LENGTH	WHEEL BASE	FORK RAKE	STAND OVER HEIGHT	BOTTOM BRACKET HEIGHT	FRONT CENTER LENGTH	HEAD TUBE LENGTH	WEIGHT
15 in	21.75 in	71°	73°	16.93 in	40.2 in	1.6 in	29.5 in	13 in	23.6 in	5.2 in	5.72 lbs
17 in	22.25 in	71.5°	73°	16.93 in	40.8 in	1.6 in	30.2 in	13 in	24.2 in	5.2 in	5.80 lbs
18 in	22.75 in	71.5°	72.5°	16.93 in	41.2 in	1.6 in	30.6 in	13 in	24.5 in	5.2 in	5.86 lbs
19 in	23.25 in	71.5°	72.5°	16.93 in	41.8 in	1.6 in	31.6 in	13 in	25.1 in	5.5 in	5.93 lbs
21 in	24.25 in	71.5°	72.5°	16.93 in	42.9 in	1.6 in	33.3 in	13 in	26.2 in	6.5 in	6.00 lbs

Photo by Hiroyuki Kaijo



- Litespeed exclusive 6Al - 4V bi-axially ovalized / 3Al - 2.5V tapered and butted titanium custom tubeset
- 3 inches of progressive rear wheel travel
- Sealed needle bearings with grease injection ports at both main pivots
- Sculpted vertical dropouts virtually eliminate axle slippage
- Fox Alps 4R Air/Oil damped adjustable rear shock
- 6Al - 4V titanium, 68 mm English threaded bottom bracket shell
- 1.375 inch clamp-on style front derailleur
- Finish: Traditional brushed
- Available groups:
Shimano XTR, XT/LX





Simple, yet sophisticated: the Obed F/S exceeds the demands of the most scrutinizing rider. Up front you'll find a suspension specific main triangle hand-crafted from oversize seamless 3Al - 2.5V titanium. Attached to this beefy front is the innovative AMP RESEARCH aluminum rear suspension. The AMP rear end features a spring/oil damped shock, low frontal pivot, and the Horst Link rear pivot.

The Obed F/S offers the strength and weight savings of titanium at a value better than most aluminum or steel full suspension models.

SIZE CENTER TO TOP	TOP TUBE LENGTH	HEAD TUBE ANGLE	SEAT TUBE ANGLE	CHAIN STAY LENGTH	WHEEL BASE	FORK RAKE	STAND OVER HEIGHT	BOTTOM BRACKET HEIGHT	FRONT CENTER LENGTH	HEAD TUBE LENGTH	WEIGHT
14.0 in	21.25 in	71°	73°	16.87 in	39.8 in	1.6 in	26.7 in	12 in	22.8 in	4 in	4.25 lbs
16.5 in	22 in	71.5°	73°	16.87 in	40.5 in	1.6 in	28.7 in	12 in	23.8 in	4.6 in	4.40 lbs
18.0 in	22.75 in	71.5°	72.5°	16.87 in	41 in	1.6 in	29.9 in	12 in	24.4 in	5.3 in	4.65 lbs
19.5 in	23.5 in	71.5°	72.5°	16.87 in	41.9 in	1.6 in	31.0 in	12 in	25.3 in	5.7 in	4.85 lbs

Photo by Tom Moran



- Litespeed 3Al - 2.5V seamless titanium front triangle
- AMP Research aluminum rear suspension
- 2.75 inches of rear wheel travel
- Low primary pivot
- Coil spring/oil damped adjustable rear shock
- Top tube cable routing with titanium cable guides
- Finish: Natural Satin front triangle, Litespeed powdercoated rear assembly
- Available groups: Shimano XTR, XT/LX, LX/STX-RC





he Obed Wild and Scenic River is a rough landscape of wild land and turbulent waters. Cutting deeply into the sandstone of the Cumberland Plateau in east Tennessee, the Obed has carved spectacular gorges as much as 500 feet deep.

This rugged yet beautiful topography parallels the design philosophy of the Litespeed Obed: tough yet beautiful. Feature for feature, the Obed boasts all the design criteria for a high performance mountain bike plus the legendary quality you've come to expect from Litespeed: oversized seamless 3Al - 2.5V tubing for rigid yet comfortable control, S-Bend seatstays to enhance braking power, asymmetric bend chainstays for excellent tire and chainring clearance, and a suspension specific geometry to keep the rider stable over the rough stuff. All this at an amazing value that makes other framebuilders embarrassed to pull out their price sheets.

SIZE CENTER TO TOP	TOP TUBE LENGTH	HEAD TUBE ANGLE	SEAT TUBE ANGLE	CHAIN STAY LENGTH	WHEEL BASE	FORK RAKE	STAND OVER HEIGHT	BOTTOM BRACKET HEIGHT	FRONT CENTER LENGTH	HEAD TUBE LENGTH	WEIGHT
12 in	21 in	71°	73°	16.93 in	39.6 in	1.6 in	24.8 in	11.75 in	22.8 in	4 in	3.12 lbs
14 in	21 in	71°	73°	16.93 in	39.6 in	1.6 in	26.4 in	11.75 in	22.8 in	4 in	3.17 lbs
16.5 in	22 in	71.5°	72.5°	16.93 in	40.3 in	1.6 in	28.4 in	11.75 in	23.8 in	4.6 in	3.29 lbs
18.0 in	22.75 in	71.5°	72.5°	16.93 in	41.1 in	1.6 in	29.7 in	11.75 in	24.4 in	5.0 in	3.43 lbs
19.5 in	23.50 in	71.5°	72.5°	16.93 in	41.8 in	1.6 in	30.8 in	11.75 in	25.2 in	5.7 in	3.47 lbs

Photo by Tom Moran

- Litespeed 3Al - 2.5V aerospace titanium tubeset
- S-Bend seatstays
- Asymmetric chainstays
- Suspension Specific Geometry
- Dual water bottle mounts
- CAD designed/CNC machined vertical rear dropouts
- Available finish: Natural Satin
- Available groups: Shimano XTR, XT/LX, LX/STX-RC



THE OBED



The Hiwassee River area offers some of the most diverse mountain biking in the entire Appalachian Mountain Range. The river spans terrain ranging from the gorges of North Carolina's Nantahala National Forest to the rolling hills of east Tennessee.

What better bike to handle this varied topography than the all-new Litespeed Hiwassee. Litespeed's oversized 3Al - 2.5V titanium tubeset provides the perfect performance characteristics for both technical singletrack and winged descents. S-Bend seatstays enhance braking stiffness and tire clearance. And channeling your power to the ground is a component group specifically matched to complement the high-end performance of the Hiwassee frame.

Photo by Tom Moran



- Litespeed 3Al - 2.5V aerospace titanium tubeset
- S-Bend seatstays
- Suspension Specific Geometry
- Dual water bottle mounts
- Grip Shift
- Rock Shox Quadra 21 R
- Finish: Litespeed yellow powdercoat
- Shimano 8 speed LX/STX-RC



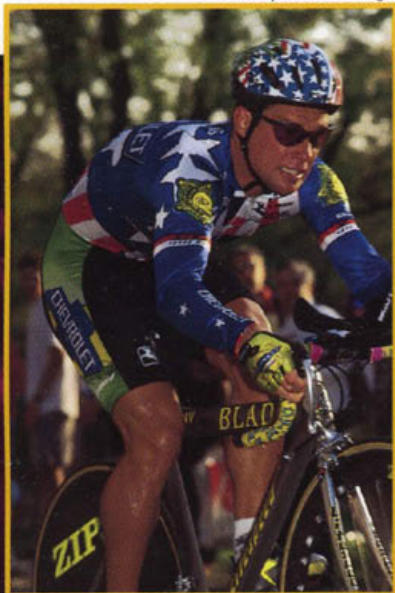
THE HIWASSEE

The Litespeed Blade is the most aerodynamic production time trial frame available. Tests conducted at the Texas A & M University wind tunnel confirm it.

The strength of titanium 6Al - 4V, a supremely aerodynamic tubeset, wind tunnel proven aero position, a 650c wheel design, and a level of rider comfort that only titanium can give, all combine to make the Litespeed Blade a no-compromise, State Of The Art choice in high-speed design.

1995 40K Time Trial U.S. National Champions: STEVE HEGG AND THE BLADE

Photo by Peter Brentlinger



Drag (in pounds) @ 30 mph with wind at angle:

0 5 10°

Litespeed Blade 26in.	1.35	1.33	1.27
Litespeed Tachyon 26in.	1.44	1.52	1.40

▶ Data generated by Steve Hed at Texas A&M Laboratories in Jan., 1995

Size* Center To Top	Top** Tube Length	Head Tube Angle	Seat Tube Angle	Chain Stay Length	Wheel Base	Fork Rake	Stand Over Height	Bottom Bracket Height	Front Center Length	Head Tube Length	Weight
50 cm	50.50 cm	72°	78°	39.3 cm	97.4 cm	3.5 cm	71.5 cm	27.0 cm	58.5 cm	9.5 cm	3.35 lbs
52 cm	52.50 cm	72.5°	78°	39.3 cm	99.2 cm	3.5 cm	72.7 cm	27.0 cm	60.3 cm	9.5 cm	3.54 lbs
54 cm	55.00 cm	73°	78°	39.3 cm	101.4 cm	3.5 cm	74.7 cm	27.0 cm	62.5 cm	11.5 cm	3.63 lbs
56 cm	56.50 cm	73.5°	78°	39.3 cm	102.6 cm	3.5 cm	76.7 cm	27.0 cm	63.7 cm	13.5 cm	3.91 lbs
58 cm	57.50 cm	73.5°	77°	39.3 cm	102.8 cm	3.5 cm	78.7 cm	27.0 cm	63.8 cm	15.5 cm	4.01 lbs

* Measured center of BBKT to top of seat tube

** Measured top center of seat tube to center of steerer axis parallel with the ground

- Litespeed exclusive 6Al - 4V / 3Al - 2.5V titanium custom aero tubeset
- Sculpted vertical dropouts virtually eliminate axle slippage
- 650c (26 inch) wheel design
- Dual water-bottle bosses
- 6Al - 4V titanium, 68 mm English threaded bottom bracket shell with vent
- Seat tube sized for 27.2 mm seat post
- Braze-on style front derailleur
- Finish: Traditional Brushed
- Available groups: Shimano Dura-Ace, Ultegra



THE BLADE



he Litespeed Tachyon has one major design parameter: Speed! The achievement of this, however, is a complex formula. Aerodynamics, rider comfort and positioning, handling, and weight all are crucial factors that affect speed.

The Tachyon uses forward seat tube angles to provide a comfortable and aerodynamic rider position. The use of 650c (26 inch) wheels further aids in the reduction of wind drag. Litespeed's custom 3Al - 2.5V titanium tubeset insures that the Tachyon is both light and strong.

The end result is a frame that is greater than the sum of its parts. The Litespeed Tachyon delivers smooth, precise performance at an incomparable value.

Size* Center To Top	Top** Tube Length	Head Tube Angle	Seat Tube Angle	Chain Stay Length	Wheel Base	Fork Rake	Stand Over Height	Bottom Bracket Height	Front Center Length	Head Tube Length	Weight
49 cm	50.00 cm	72°	78°	39.3 cm	96.8 cm	3.5 cm	71.5 cm	27.0 cm	57.9 cm	8.7 cm	2.89 lbs
51 cm	51.50 cm	72.5°	78°	39.3 cm	98.1 cm	3.5 cm	71.5 cm	27.0 cm	59.1 cm	8.7 cm	2.97 lbs
53 cm	54.25 cm	73°	78°	39.3 cm	100.6 cm	3.5 cm	73.8 cm	27.0 cm	61.6 cm	10.5 cm	3.12 lbs
55 cm	55.75 cm	73.5°	78°	39.3 cm	101.8 cm	3.5 cm	75.7 cm	27.0 cm	62.9 cm	12.5 cm	3.26 lbs
57 cm	57.00 cm	73.5°	77°	39.3 cm	102.2 cm	3.5 cm	77.7 cm	27.0 cm	63.2 cm	14.5 cm	3.30 lbs
59 cm	58.50 cm	73.5°	76°	39.3 cm	102.7 cm	3.5 cm	79.7 cm	27.0 cm	63.8 cm	16.5 cm	3.45 lbs
***61 cm	60.00 cm	73°	76°	40.6 cm	105.5 cm	4.0 cm	81.5 cm	27.0 cm	65.8 cm	13.3 cm	3.41 lbs

* Measured center of BBKT to top of seat tube

** Measured top center of seat tube to center of steerer axis parallel with the ground

*** 700c Wheels

- Litespeed custom 3Al - 2.5V titanium tubeset
- Vertical dropouts virtually eliminate axle slippage
- 650c (26 inch) wheel design
- Dual water-bottle bosses
- 6Al - 4V titanium, 68 mm English threaded bottom bracket shell with vent
- Seat tube sized for 27.2 mm seat post
- 1.375 inch clamp-on style front derailleur
- Finish: Natural Satin
- Available groups: Shimano Dura-Ace, Ultegra

Photo by Peter Brenflinger



"This amazing Litespeed....sets the standard by which I'll judge all future dream machines."

-**Jim Langley**, Tech. Editor,
Bicycling magazine

"Fly up some climbs on this bike, and you'll solve any self-esteem problems you might have."

-**Garrett Lai**, Editor,
Bicycle Guide magazine



Comments like these have become commonplace when discussing the Litespeed Vortex. This bike has brought cycling "State Of The Art" to a level never before thought possible. Utilizing the Litespeed exclusive 6Al - 4V titanium tubeset, we have created a frame that, while remaining inconceivably lightweight, maintains the strength necessary for high performance. Instantaneous acceleration, rail-like stability on descents, a well balanced geometry, and unmatched craftsmanship—let 'em try to stay on your wheel.

SIZE CENTER TO TOP	TOP TUBE LENGTH	HEAD TUBE ANGLE	SEAT TUBE ANGLE	CHAIN STAY LENGTH	WHEEL BASE	FORK RAKE	STAND OVER HEIGHT	BOTTOM BRACKET HEIGHT	FRONT CENTER LENGTH	HEAD TUBE LENGTH	WEIGHT
49 cm	51.00 cm	72°	74°	40.6 cm	95.4 cm	4.5 cm	74.0 cm	26.9 cm	55.8 cm	9.0 cm	2.26 lbs
51 cm	52.50 cm	72.5°	74°	40.6 cm	96.5 cm	4.5 cm	75.9 cm	26.9 cm	56.8 cm	9.0 cm	2.36 lbs
53 cm	54.00 cm	73°	74°	40.6 cm	97.5 cm	4.5 cm	77.6 cm	26.6 cm	58.0 cm	10.3 cm	2.47 lbs
55 cm	55.50 cm	73°	73°	40.6 cm	97.5 cm	4.0 cm	79.2 cm	26.6 cm	57.9 cm	11.9 cm	2.55 lbs
57 cm	56.50 cm	73°	73°	40.6 cm	98.5 cm	4.0 cm	81.1 cm	26.6 cm	58.9 cm	13.9 cm	2.63 lbs
59 cm	58.00 cm	73°	73°	40.6 cm	99.9 cm	4.0 cm	82.7 cm	26.3 cm	60.4 cm	15.6 cm	2.71 lbs
61 cm	59.00 cm	73°	72.5°	41.1 cm	100.8 cm	4.0 cm	84.5 cm	26.3 cm	60.9 cm	17.4 cm	2.88 lbs

- Litespeed exclusive 6Al - 4V titanium custom tubeset
- New multi-shaped chainstays
- Sculpted vertical dropouts virtually eliminate axle slippage
- Dual water-bottle bosses with titanium fasteners
- 6Al - 4V titanium, 68 mm English threaded bottom bracket shell with vent
- Sculpted seat tube sized for 27.2 mm seat post
- 1.375 inch clamp-on front derailleur mounting
- Finish: Tradition brushed
- Available groups:
Campagnolo: Record, Chorus
Shimano: Dura-Ace, Ultegra

Photo by Peter Brentlinger



THE VORTEX

SIZE CENTER TO TOP	TOP TUBE LENGTH	HEAD TUBE ANGLE	SEAT TUBE ANGLE	CHAIN STAY LENGTH	WHEEL BASE	FORK RAKE	STAND OVER HEIGHT	BOTTOM BRACKET HEIGHT	FRONT CENTER LENGTH	HEAD TUBE LENGTH	WEIGHT
48 cm	50.00 cm	72.0°	74.0°	39.3 cm	93.6 cm	4.5 cm	74.1 cm	26.9 cm	55.3 cm	10.1 cm	3.12 lbs
50 cm	52.00 cm	72.5°	73.5°	39.3 cm	95.3 cm	4.5 cm	75.5 cm	26.9 cm	57.0 cm	10.2 cm	3.14 lbs
52 cm	53.25 cm	73.0°	73.0°	39.3 cm	95.3 cm	4.5 cm	76.9 cm	26.9 cm	57.0 cm	10.3 cm	3.17 lbs
53 cm	54.00 cm	73.0°	73.0°	39.3 cm	95.6 cm	4.5 cm	77.7 cm	26.9 cm	57.3 cm	10.8 cm	3.21 lbs
54 cm	54.75 cm	73.0°	73.0°	39.3 cm	96.2 cm	4.0 cm	78.8 cm	26.9 cm	57.9 cm	11.7 cm	3.25 lbs
55 cm	55.50 cm	73.0°	73.0°	39.3 cm	96.7 cm	4.0 cm	79.8 cm	26.9 cm	58.9 cm	12.5 cm	3.28 lbs
56 cm	56.00 cm	73.0°	73.0°	39.3 cm	97.5 cm	4.0 cm	80.6 cm	26.9 cm	59.1 cm	13.4 cm	3.31 lbs
57 cm	56.50 cm	73.0°	73.0°	39.3 cm	98.1 cm	4.0 cm	81.6 cm	26.9 cm	59.7 cm	14.4 cm	3.34 lbs
58 cm	57.00 cm	73.0°	73.0°	39.3 cm	98.6 cm	4.0 cm	82.5 cm	26.9 cm	60.1 cm	15.4 cm	3.38 lbs
59 cm	57.50 cm	73.0°	73.0°	39.3 cm	99.1 cm	4.0 cm	83.5 cm	26.9 cm	60.8 cm	16.4 cm	3.42 lbs
60 cm	58.00 cm	73.0°	73.0°	39.3 cm	99.6 cm	4.0 cm	84.5 cm	26.9 cm	61.3 cm	17.4 cm	3.46 lbs
62 cm	60.00 cm	73.0°	73.0°	39.3 cm	100.6 cm	4.0 cm	86.4 cm	26.9 cm	63.3 cm	19.4 cm	3.55 lbs

The Litespeed Ultimate has become the most sought after high performance bike in the world. The reason is simple: the Litespeed Ultimate delivers a higher level of overall performance than any other road frame made, regardless of material. At the base of this success is our custom cold-worked tubeset. We take U.S. made, 3Al - 2.5V titanium tubing and specially cold-work it in-house by swaging, tapering, bending, and internally butting. When properly performed, these cold-working processes actually increase the strength levels of the titanium tubing by as much as 50%. Since its initial development, this tubeset has claimed a World Championship, two Tour DuPont Championships, stage wins at the Tour DeFrance, and three U.S. Pro National titles. Precise handling, screaming acceleration, wicked cornering, and titanium enhanced rider comfort make the Litespeed Ultimate one bike that lives up to its name.

Photo by Peter Brentlinger

- Litespeed custom 3Al - 2.5V titanium tapered/butted tubeset
- Sculpted vertical dropouts virtually eliminate axle slippage
- Dual water-bottle bosses with titanium fasteners
- 6Al - 4V titanium, 68 mm English threaded bottom bracket shell with vent
- Sculpted seat tube sized for 27.2 mm seat post
- Braze on style front derailleur
- Finish: Traditional brushed or Brilliant polished
- Available groups:
Campagnolo: Record, Chorus
Shimano: Dura-Ace, Ultegra



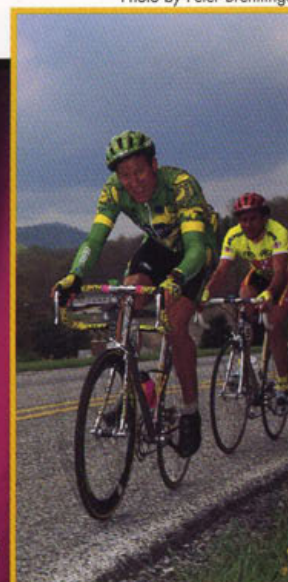
Trickle Down Technology is perhaps the best way to describe the all new Litespeed Catalyst. For 1996, the extraordinary performance levels of our exclusive Litespeed cold-worked/tapered-butted tubeset have been matched to the Catalyst's aggressive but stable geometry. Our new oversized tapered/butted front triangle has been designed to complement the tapered/butted and ovalized chainstays. The result is significantly increased all-around performance with no weight penalty. The 1996 Catalyst's greater stability, increased acceleration, and enhanced climbing are just a few of the refined attributes that will keep you off the front.

SIZE CENTER TO TOP	TOP TUBE LENGTH	HEAD TUBE ANGLE	SEAT TUBE ANGLE	CHAIN STAY LENGTH	WHEEL BASE	FORK RAKE	STAND OVER HEIGHT	BOTTOM BRACKET HEIGHT	FRONT CENTER LENGTH	HEAD TUBE LENGTH	WEIGHT
49 cm	51.00 cm	72.0°	74.0°	40.6 cm	95.4 cm	4.5 cm	74.0 cm	26.9 cm	55.8 cm	9.0 cm	2.83 lbs
51 cm	52.50 cm	72.5°	74.0°	40.6 cm	96.5 cm	4.5 cm	75.9 cm	26.9 cm	56.8 cm	9.0 cm	2.94 lbs
53 cm	54.00 cm	73.0°	74.0°	40.6 cm	97.5 cm	4.5 cm	77.6 cm	26.6 cm	58.0 cm	10.3 cm	3.07 lbs
55 cm	55.50 cm	73.0°	73.0°	40.6 cm	97.5 cm	4.0 cm	79.2 cm	26.6 cm	57.9 cm	11.9 cm	3.20 lbs
57 cm	56.50 cm	73.0°	73.0°	40.6 cm	98.5 cm	4.0 cm	81.1 cm	26.6 cm	58.9 cm	13.9 cm	3.24 lbs
59 cm	57.50 cm	73.0°	73.0°	40.6 cm	99.4 cm	4.0 cm	82.7 cm	26.3 cm	59.9 cm	15.6 cm	3.30 lbs
61 cm	59.00 cm	73.0°	72.5°	41.1 cm	100.8 cm	4.0 cm	84.5 cm	26.3 cm	60.9 cm	17.4 cm	3.36 lbs

- Litespeed custom 3Al - 2.5V titanium tapered/butted tubeset
- New vertical dropouts virtually eliminate axle slippage
- Dual water-bottle bosses
- 6Al - 4V titanium, 68 mm English threaded bottom bracket shell with vent
- Seat tube sized for 27.2 mm seat post
- 1.375 inch clamp-on style front derailleur
- Finish: Natural Satin
- Available groups:
Campagnolo: Record, Chorus
Shimano: Dura-Ace, Ultegra



Photo by Peter Brentlinger



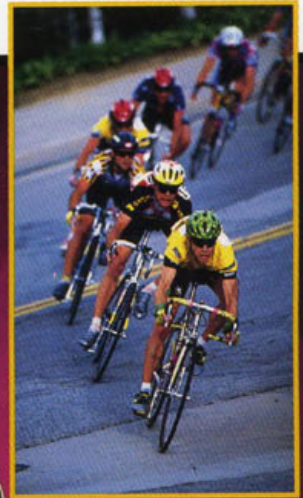


The Natchez Indians were a fierce tribe of warriors in Southern Mississippi. History indicates that in the 17th century the Natchez reigned over the area with savage proficiency. Their chiefs also maintained total power over their subjects' lives and property.

So rules the Litespeed Natchez over the peloton. Absolute power and control become yours the instant you begin to put the Natchez through its paces. Precise handling, untamed acceleration, and unrivaled resilient titanium comfort alloyed with select componentry make the Natchez a superior warhorse.

All you need to add is warpaint!

Photo by Peter Brentlinger



- Litespeed 3Al - 2.5V aerospace quality titanium tubeset
- Lightweight CAD designed/ CNC machined vertical dropouts
- Dual water bottle mounts
- 6Al - 4V titanium 68mm vented bottom bracket shell
- Kinesis Aluminum fork
- Finish: Litespeed yellow powdercoat
- Campagnolo Mirage with Anodized Finish
- Low Profile crankarms with Exa-Drive cassette and Monoplaner Brakes

SIZE CENTER TO TOP	TOP TUBE LENGTH	HEAD TUBE ANGLE	SEAT TUBE ANGLE	CHAIN STAY LENGTH	WHEEL BASE	FORK RAKE	STAND OVER HEIGHT	BOTTOM BRACKET HEIGHT	FRONT CENTER LENGTH	HEAD TUBE LENGTH	WEIGHT
49 cm	51.00 cm	72.0°	74.0°	40.6 cm	95.4 cm	4.5 cm	74.0 cm	26.9 cm	55.8 cm	9.0 cm	2.92 lbs
51 cm	52.50 cm	72.5°	74.0°	40.6 cm	96.5 cm	4.5 cm	75.9 cm	26.9 cm	56.8 cm	9.0 cm	3.04 lbs
53 cm	54.00 cm	73.0°	74.0°	40.6 cm	97.5 cm	4.5 cm	77.6 cm	26.6 cm	58.0 cm	10.3 cm	3.17 lbs
55 cm	55.50 cm	73.0°	73.0°	40.6 cm	97.5 cm	4.0 cm	79.2 cm	26.6 cm	57.9 cm	11.9 cm	3.31 lbs
57 cm	56.50 cm	73.0°	73.0°	40.6 cm	98.5 cm	4.0 cm	81.1 cm	26.6 cm	58.9 cm	13.9 cm	3.34 lbs
59 cm	57.50 cm	73.0°	73.0°	40.6 cm	99.4 cm	4.0 cm	82.7 cm	26.3 cm	59.9 cm	15.6 cm	3.38 lbs
61 cm	59.00 cm	73.0°	72.5°	41.1 cm	100.8 cm	4.0 cm	84.5 cm	26.3 cm	60.9 cm	17.4 cm	3.47 lbs

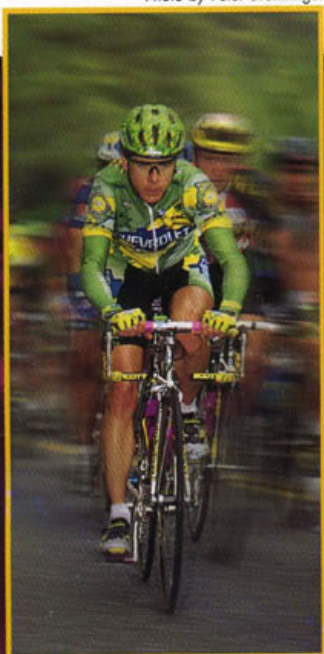


THE NACHEZ

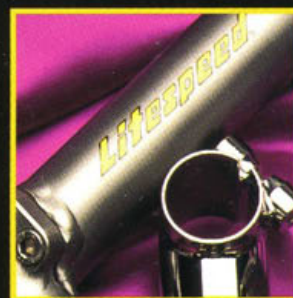
The Litespeed Classic is a road frame that combines traditional styling with State Of The Art technology. The Litespeed custom 3Al - 2.5V titanium tapered/butted tubeset blends with our geometry to allow the rider to carve tighter corners yet maintain compliance for sure climbing, acceleration and, of course, unmatched titanium comfort. Our craftsmen hand work each tube, braze-on, and dropout to create a beautiful merging of style, strength, comfort, and versatility. The end result is a high performance bike that excels on multi-day fast tours and the afternoon club ride.

SIZE CENTER TO TOP	TOP TUBE LENGTH	HEAD TUBE ANGLE	SEAT TUBE ANGLE	CHAIN STAY LENGTH	WHEEL BASE	FORK RAKE	STAND OVER HEIGHT	BOTTOM BRACKET HEIGHT	FRONT CENTER LENGTH	HEAD TUBE LENGTH	WEIGHT
49 cm	51.00 cm	72.0°	74.0°	40.6 cm	95.4 cm	4.5 cm	74.0 cm	26.9 cm	55.8 cm	9.0 cm	2.82 lbs
51 cm	52.50 cm	72.5°	74.0°	40.6 cm	96.5 cm	4.5 cm	75.9 cm	26.9 cm	56.8 cm	9.0 cm	2.93 lbs
53 cm	54.00 cm	73.0°	74.0°	40.6 cm	97.5 cm	4.5 cm	77.6 cm	26.6 cm	58.0 cm	10.3 cm	3.06 lbs
55 cm	55.50 cm	73.0°	73.0°	40.6 cm	97.5 cm	4.0 cm	79.2 cm	26.6 cm	57.9 cm	11.9 cm	3.19 lbs
57 cm	56.50 cm	73.0°	73.0°	40.6 cm	98.5 cm	4.0 cm	81.1 cm	26.6 cm	58.9 cm	13.9 cm	3.23 lbs
59 cm	57.50 cm	73.0°	73.0°	40.6 cm	99.4 cm	4.0 cm	82.7 cm	26.3 cm	59.9 cm	15.6 cm	3.29 lbs
61 cm	59.00 cm	73.0°	72.5°	41.1 cm	100.8 cm	4.0 cm	84.5 cm	26.3 cm	60.9 cm	17.4 cm	3.35 lbs
63 cm	61.00 cm	73.0°	72.0°	41.1 cm	102.1 cm	4.0 cm	86.2 cm	26.3 cm	62.2 cm	19.2 cm	3.42 lbs

Photo by Peter Brentlinger



- Litespeed custom 3Al - 2.5V titanium tapered/butted tubeset
- Sculpted vertical dropouts virtually eliminate axle slippage
- Dual water-bottle bosses with titanium fasteners
- 6Al - 4V titanium, 68 mm English threaded bottom bracket shell with vent
- Sculpted seat tube sized for 27.2 mm seat post
- Braze-on style front derailleur
- Finish: Traditional brushed or Brilliant polished
- Available groups:
Campagnolo: Record, Chorus
Shimano: Dura-Ace, Ultegra



The Components

The Accessories

The Apparel



Team Jersey

- Giordana Li-Tech™ 55% cotton, 45% polyester blend
- Sizes: 2,3,4,5, and 6

Team Shorts

- Giordana Lycra® Spandex® fabric
- Sizes: 2,3,4,5, and 6

Tee Shirts

- 100% Cotton
- Grey with crest and logo silkscreen
- Sizes: Small, medium, large, x-large

Polo Shirts

- 100% Cotton
- Grey/Wheat, embroidered crest and logo
- Sizes: Small, medium, large, x-large

Hats

- 100% Cotton
- Grey with embroidered crest
- Sizes: Fully adjustable

APPAREL



ACCESSORIES

Titanium Road Stems

- Negative 14 degree rise
- 90 mm, 100 mm, 110 mm, 120 mm, 130 mm reach
- Finishes: Satin, brushed, polished
- Weight: Average Road 185 grams

Titanium Mountain Stems

- 5 degree rise
- Aheadset style, 1 1/8"
- 120 mm, 135 mm, 145 mm reach
- Finishes: Satin, brushed, polished
- Weight: Average 160 grams

Titanium Seatposts

- 27.2 mm diameter
- Finishes: Satin, brushed, polished
- Weight: 215 grams

Titanium Mountain Handlebar

- Seamless, bulge type
- 24" length
- Finish: Brushed
- Weight: 170 grams

Titanium Bottom Bracket Assembly

- 6Al/4V spindle with sealed bearings
- 1.375" -24 TPI for 68 mm bottom bracket shell
- Sizes: 103 mm, 107 mm, 113 mm, 118 mm
- Weight: Average 150 grams



FORKS

Kinesis
Aluminum

Look
Carbon Fiber

Kestrel
EMS Weave

Quadra
21R

Mag 21

Judy XC

Judy SL

COMPONENTRY GROUPS

ROAD

Campagnolo:

Record

Chorus

Mirage

Shimano:

Dura-Ace

Ultegra

MOUNTAIN

Shimano:

XTR

XT/LX

LX/STX-RC

RIMS

Hed Jet

Spinergy Rev-X

Campagnolo Vento

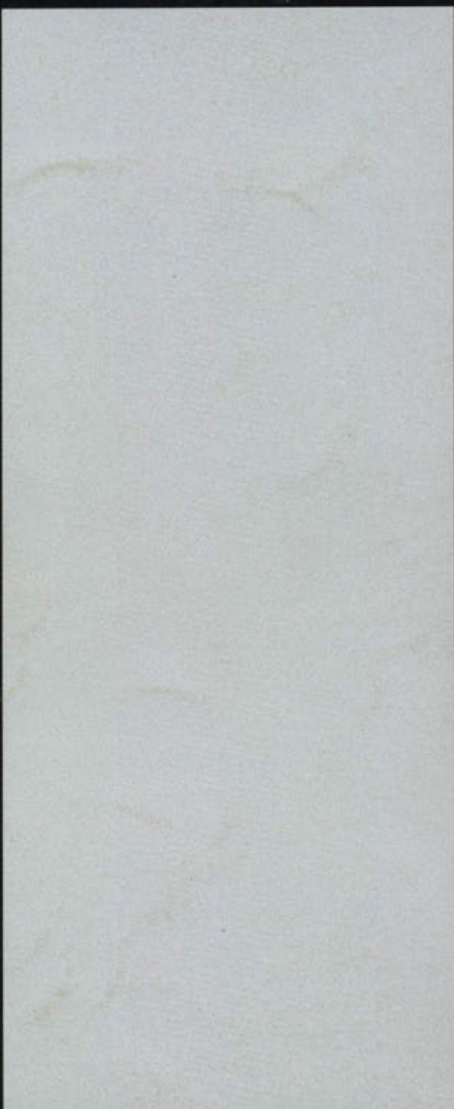
Campagnolo Shamal

Campagnolo Bora



Litespeed Titanium Bicycles
Post Office Box 22666
Chattanooga, Tennessee 37422
423•238•5530
FAX 423•238•4999

MAIL TO: ▼



BULK RATE
U.S. Postage
PAID
Ooltewah, TN 37363
PERMIT NO. 20